

Mark

Item 1 of 43 (Exam A, Q467)

[Show Answer](#)[Calculator](#)

In which two spanning-tree port states is the port learning MAC addresses? (Choose two.)

- A. disabled
- B. blocking
- C. listening
- D. learning
- E. forwarding

Select all that apply.

100%

[Previous](#)[Next](#)[Review All](#) ▼[Save Session](#)[End Exam](#)

Mark

Item 1 of 43 (Exam A, Q467)

[Hide Answer](#)[Calculator](#)

In which two spanning-tree port states is the port learning MAC addresses? (Choose two.)

- A. disabled
- B. blocking
- C. listening
- D. learning
- E. forwarding

Answer: DE
Section: STP

Select all that apply.

100%

[Previous](#)[Next](#)[Review All](#) ▼[Save Session](#)[End Exam](#)

Mark

Item 2 of 43 (Exam A, Q101)

[Show Answer](#)[Calculator](#)

Which two of these are used in the selection of a root bridge in a network utilizing Spanning Tree Protocol IEEE 802.1D? (Choose two.)

- A. Designated Root Cost
- B. bridge ID priority
- C. max age
- D. bridge ID MAC address
- E. Designated Root Priority
- F. forward delay

Select all that apply.

100%

[Previous](#)[Next](#)[Review All](#) ▼[Save Session](#)[End Exam](#)

Mark

Item 2 of 43 (Exam A, Q101)

Hide Answer

Calculator

Which two of these are used in the selection of a root bridge in a network utilizing Spanning Tree Protocol IEEE 802.1D? (Choose two.)

- A. Designated Root Cost
- B. bridge ID priority
- C. max age
- D. bridge ID MAC address
- E. Designated Root Priority
- F. forward delay

Answer: BD
Section: STP

Select all that apply.

100%

Previous

Next

Review All ▾

Save Session

End Exam

Mark

Item 3 of 43 (Exam A, Q71)

[Show Answer](#)[Calculator](#)

While you are troubleshooting network performance issues, you notice that a switch is periodically flooding all unicast traffic. Further investigation reveals that periodically the switch is also having spikes in CPU utilization, causing the MAC address table to be flushed and relearned. What is the most likely cause of this issue?

- A. a routing protocol that is flooding updates
- B. a flapping port that is generating BPDUs with the TCN bit set
- C. STP is not running on the switch
- D. a user that is downloading the output of the show-tech command
- E. a corrupted switch CAM table

Select the best choice.

100%

[Previous](#)[Next](#)[Review All](#) ▼[Save Session](#)[End Exam](#)

Mark

Item 3 of 43 (Exam A, Q71)

[Hide Answer](#)[Calculator](#)

While you are troubleshooting network performance issues, you notice that a switch is periodically flooding all unicast traffic. Further investigation reveals that periodically the switch is also having spikes in CPU utilization, causing the MAC address table to be flushed and relearned. What is the most likely cause of this issue?

- A. a routing protocol that is flooding updates
- B. a flapping port that is generating BPDUs with the TCN bit set
- C. STP is not running on the switch
- D. a user that is downloading the output of the show-tech command
- E. a corrupted switch CAM table

Answer: B
Section: STP

Select the best choice.

100%

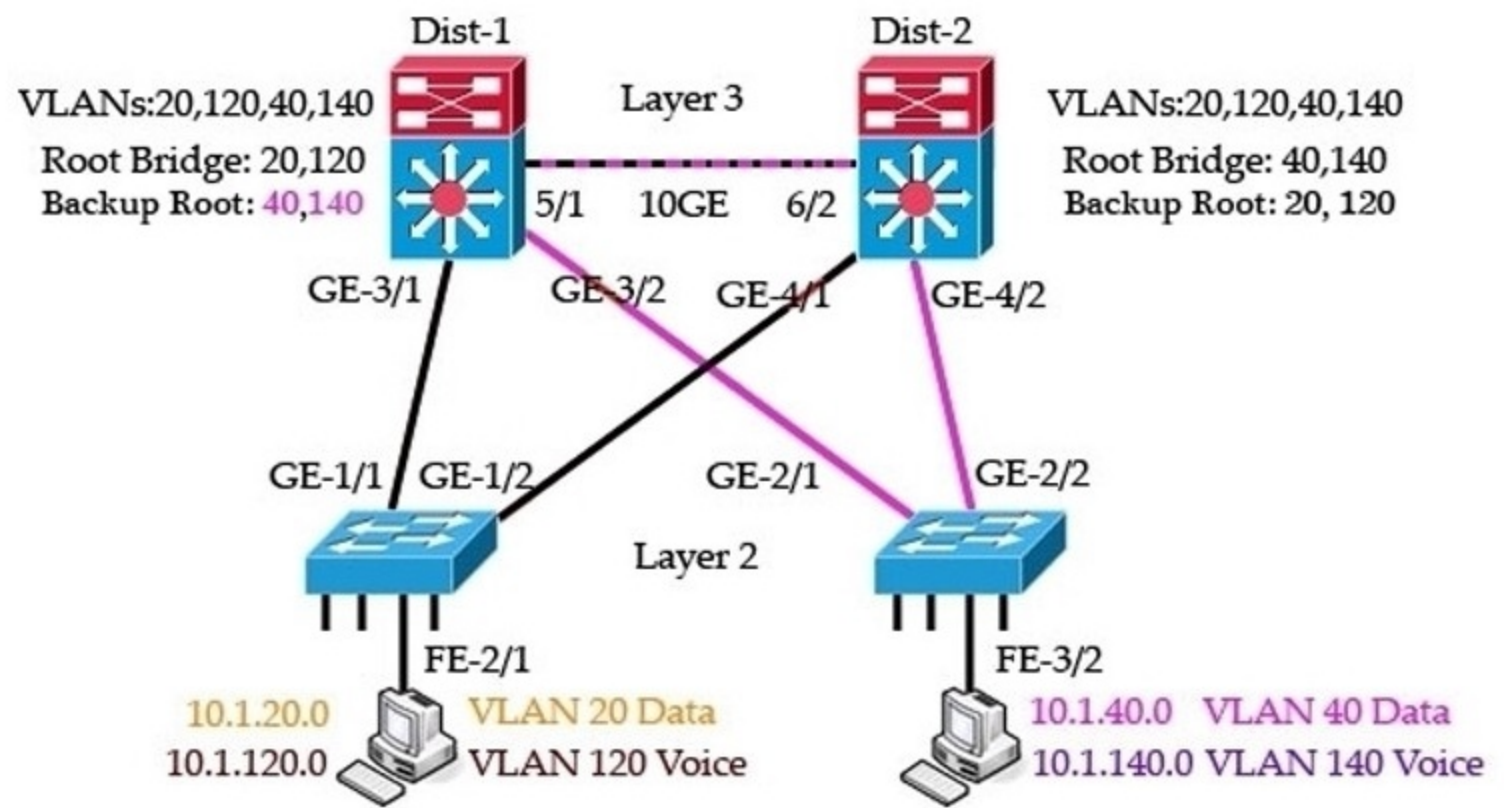
[Previous](#)[Next](#)[Review All](#) ▼[Save Session](#)[End Exam](#)

Mark

Show Answer Calculator

Item 4 of 43 (Exam A, Q112)

Refer to the exhibit. In the diagram, the switches are running IEEE 802.1w RSTP.
 On which ports should root guard be enabled in order to facilitate deterministic root bridge election under normal and failure scenarios?



- A. GE-3/1, GE-3/2
- B. FE-2/1, FE-3/2
- C. GE-1/1, GE-1/2
- D. GE-4/1, GE-4/2

Select the best choice.

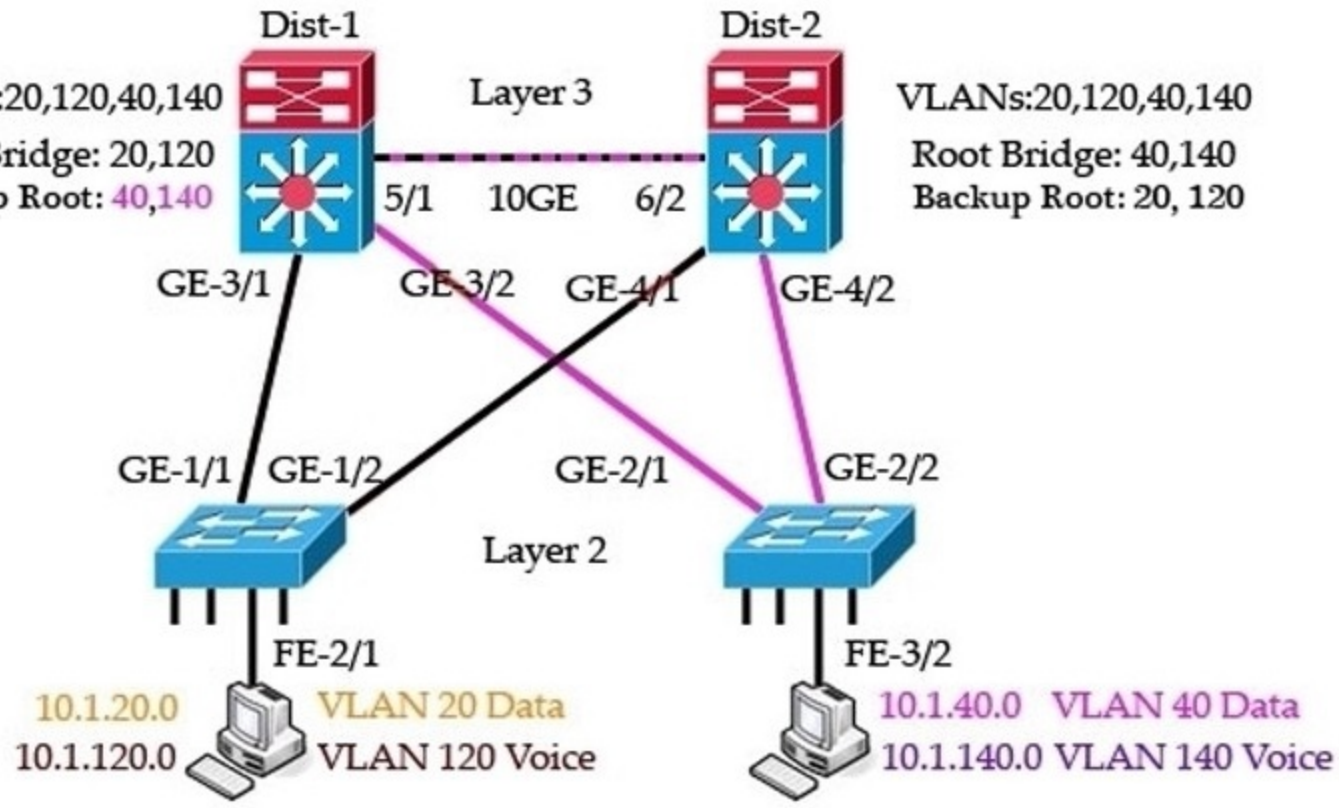
100%

Previous Next Review All

Save Session End Exam

Mark

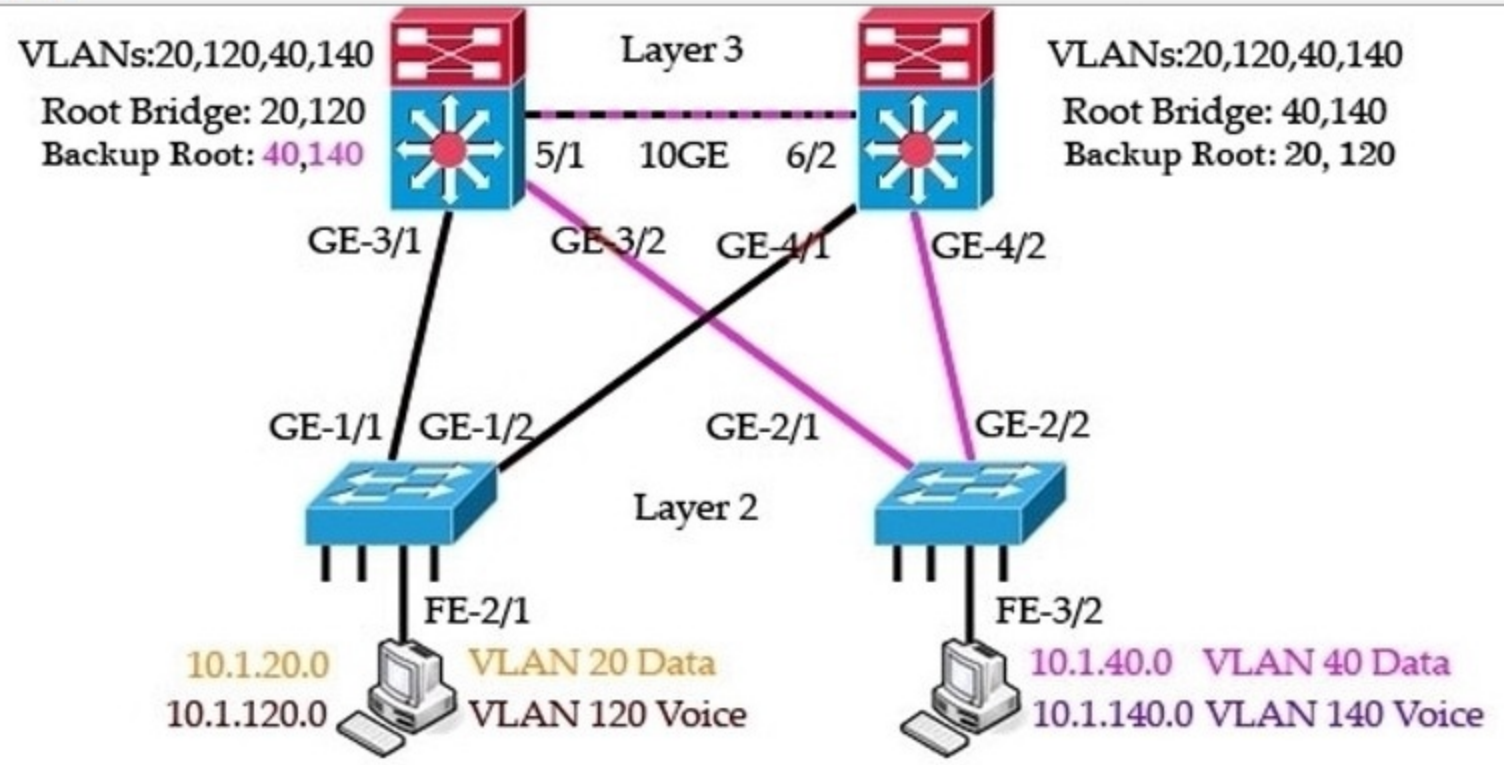
Refer to the exhibit. In the diagram, the switches are running IEEE 802.1w RSTP.
 On which ports should root guard be enabled in order to facilitate deterministic root bridge election under normal and failure scenarios?



- A. GE-3/1, GE-3/2
- B. FE-2/1, FE-3/2
- C. GE-1/1, GE-1/2
- D. GE-4/1, GE-4/2
- E. GE-2/1, GE-2/2
- F. GE-3/1, GE-3/2, GE-4/1, GE-4/2, FE-2/1, FE-3/2

Select the best choice.

Mark



- A. GE-3/1, GE-3/2
- B. FE-2/1, FE-3/2
- C. GE-1/1, GE-1/2
- D. GE-4/1, GE-4/2
- E. GE-2/1, GE-2/2
- F. GE-3/1, GE-3/2, GE-4/1, GE-4/2, FE-2/1, FE-3/2

Answer: F
Section: STP

Select the best choice.

100%

Mark

Item 5 of 43 (Exam A, Q472)

Show Answer

Calculator

When using extended system ID in 802.1d, how many bits are reserved for this field?

- A. 6
- B. 8
- C. 10
- D. 12

Select the best choice.

100%

Previous

Next

Review All ▾

Save Session

End Exam

Mark

Item 5 of 43 (Exam A, Q472)

[Hide Answer](#)[Calculator](#)

When using extended system ID in 802.1d, how many bits are reserved for this field?

- A. 6
- B. 8
- C. 10
- D. 12

Answer: D
Section: STP

Select the best choice.

100%

[Previous](#)[Next](#)[Review All](#) ▼[Save Session](#)[End Exam](#)

Mark

Item 6 of 43 (Exam A, Q241)

[Show Answer](#)[Calculator](#)

Prior to 802.1w, Cisco implemented a number of proprietary enhancements to 802.1D to improve convergence in a Layer 2 network. Which statement is correct?

- A. Only UplinkFast and BackboneFast are specified in 802.1w; PortFast must be manually configured.
- B. Only PortFast is specified in 802.1w; UplinkFast and BackboneFast must be manually configured.
- C. None of the proprietary Cisco enhancements are specified in 802.1w.
- D. PortFast, UplinkFast, and BackboneFast are specified in 802.1w.

Select the best choice.

100%

[Previous](#)[Next](#)[Review All](#) ▼[Save Session](#)[End Exam](#)

Mark

Item 6 of 43 (Exam A, Q241)

Hide Answer

Calculator

Prior to 802.1w, Cisco implemented a number of proprietary enhancements to 802.1D to improve convergence in a Layer 2 network. Which statement is correct?

- A. Only UplinkFast and BackboneFast are specified in 802.1w; PortFast must be manually configured.
- B. Only PortFast is specified in 802.1w; UplinkFast and BackboneFast must be manually configured.
- C. None of the proprietary Cisco enhancements are specified in 802.1w.
- D. PortFast, UplinkFast, and BackboneFast are specified in 802.1w.

Answer: D
Section: STP

Select the best choice.

100%

Previous

Next

Review All ▾

Save Session

End Exam

Mark

Item 7 of 43 (Exam A, Q469)

[Show Answer](#)[Calculator](#)

What is the BPDU protocol version for 802.1w?

- A. 0
- B. 1
- C. 2
- D. 3

Select the best choice.

100%

[Previous](#)[Next](#)[Review All](#) ▼[Save Session](#)[End Exam](#)

Mark

Item 7 of 43 (Exam A, Q469)

Hide Answer

Calculator

What is the BPDU protocol version for 802.1w?

- A. 0
- B. 1
- C. 2
- D. 3

Answer: C
Section: STP

Select the best choice.

100%

Previous

Next

Review All



Save Session

End Exam

Mark

Item 8 of 43 (Exam A, Q466)

Show Answer

Calculator

How many bytes make up the spanning-tree bridge ID?

- A. 4
- B. 8
- C. 12
- D. 16

Select the best choice.

100%



Previous

Next

Review All ▾

Save Session

End Exam

Mark

Item 8 of 43 (Exam A, Q466)

[Hide Answer](#)[Calculator](#)

How many bytes make up the spanning-tree bridge ID?

- A. 4
- B. 8
- C. 12
- D. 16

Answer: B
Section: STP

Select the best choice.

100%

[Previous](#)[Next](#)[Review All](#) ▼[Save Session](#)[End Exam](#)

Mark

Item 9 of 43 (Exam A, Q109)

[Show Answer](#)[Calculator](#)

Which three port states are used by RSTP 802.1w? (Choose three.)

- A. Listening
- B. Learning
- C. Forwarding
- D. Blocking
- E. Discarding
- F. Disabled

Select all that apply.

100%

[Previous](#)[Next](#)[Review All](#) ▼[Save Session](#)[End Exam](#)

Mark

Item 9 of 43 (Exam A, Q109)

Hide Answer

Calculator

Which three port states are used by RSTP 802.1w? (Choose three.)

- A. Listening
- B. Learning
- C. Forwarding
- D. Blocking
- E. Discarding
- F. Disabled

Answer: BCE

Section: STP

Rapid Spanning Tree (RSTP) 802.1w is a standards-based, non-proprietary way of speeding STP convergence.

Switch ports exchange an explicit handshake when they transition to forwarding.

RSTP describes different port states than regular STP as described below:

STP Port State	Equivalent RSTP Port State
Disabled	Discarding
Blocking	Discarding
Listening	Discarding
Learning	Learning
Forwarding	Forwarding

Select all that apply.

100%



Previous

Next

Review All



Save Session

End Exam

Mark

Item 10 of 43 (Exam A, Q231)

[Show Answer](#)[Calculator](#)

While deploying a new switch, you accidentally connect ports 3/12 and 3/18 together, creating a loop. STP detected it and placed port 3/18 in blocking mode. Why did STP not place port 3/12 in blocking mode instead?

- A. Port 3/12 was already up and forwarding before the loop was created.
- B. Port priority is based on lowest priority and lowest port number.
- C. You connected the wire on port 3/18 last.
- D. None of the above, it is purely random.

Select the best choice.

100%

[Previous](#)[Next](#)[Review All](#) ▼[Save Session](#)[End Exam](#)

Mark

Item 10 of 43 (Exam A, Q231)

Hide Answer

Calculator

While deploying a new switch, you accidentally connect ports 3/12 and 3/18 together, creating a loop. STP detected it and placed port 3/18 in blocking mode. Why did STP not place port 3/12 in blocking mode instead?

- A. Port 3/12 was already up and forwarding before the loop was created.
- B. Port priority is based on lowest priority and lowest port number.
- C. You connected the wire on port 3/18 last.
- D. None of the above, it is purely random.

Answer: B
Section: STP

Select the best choice.

100%

Previous

Next

Review All



Save Session

End Exam

Mark

Item 11 of 43 (Exam A, Q471)

[Show Answer](#)[Calculator](#)

Which statement is true about TCN propagation in RSTP (802.1w)?

- A. The originator of the TCN immediately floods this information through the network.
- B. The TCN propagation is a two step process.
- C. A TCN is generated and sent to the root bridge.
- D. The root bridge must flood this information throughout the network.

Select the best choice.

100%

[Previous](#)[Next](#)[Review All](#) ▼[Save Session](#)[End Exam](#)

Mark

Item 11 of 43 (Exam A, Q471)

[Hide Answer](#)[Calculator](#)

Which statement is true about TCN propagation in RSTP (802.1w)?

- A. The originator of the TCN immediately floods this information through the network.
- B. The TCN propagation is a two step process.
- C. A TCN is generated and sent to the root bridge.
- D. The root bridge must flood this information throughout the network.

Answer: A
Section: STP

Select the best choice.

100%

[Previous](#)[Next](#)[Review All](#) ▼[Save Session](#)[End Exam](#)

Mark

Item 12 of 43 (Exam A, Q108)

[Show Answer](#)[Calculator](#)

The classic Spanning Tree Protocol (802.1D 1998) uses which sequence of variables to determine the best received BPDU?

- A. 1) lowest root bridge id, 2) lowest sender bridge id, 3) lowest port id, 4) lowest root path cost
- B. 1) lowest root path cost, 2) lowest root bridge id, 3) lowest sender bridge id, 4) lowest sender port id
- C. 1) lowest root bridge id, 2) lowest sender bridge id, 3) lowest root path cost 4) lowest sender port id
- D. 1) lowest root bridge id, 2) lowest root path cost, 3) lowest sender bridge id, 4) lowest sender port id

Select the best choice.

100%

[Previous](#)[Next](#)[Review All](#) ▼[Save Session](#)[End Exam](#)

Mark

Item 12 of 43 (Exam A, Q108)

Hide Answer

Calculator

The classic Spanning Tree Protocol (802.1D 1998) uses which sequence of variables to determine the best received BPDU?

- A. 1) lowest root bridge id, 2) lowest sender bridge id, 3) lowest port id, 4) lowest root path cost
- B. 1) lowest root path cost, 2) lowest root bridge id, 3) lowest sender bridge id, 4) lowest sender port id
- C. 1) lowest root bridge id, 2) lowest sender bridge id, 3) lowest root path cost 4) lowest sender port id
- D. 1) lowest root bridge id, 2) lowest root path cost, 3) lowest sender bridge id, 4) lowest sender port id

Answer: D

Section: STP

Configuration bridge protocol data units (BPDUs) are sent between switches for each port. Switches use a fourstep process to save a copy of the best BPDU seen on every port. When a port receives a better BPDU, it stops sending them. If the BPDUs stop arriving for 20 seconds (default), it begins sending them again.

- Step 1 Lowest Root Bridge ID (BID)
- Step 2 Lowest Path cost to Root Bridge
- Step 3 Lowest Sender BID
- Step 4 Lowest Port ID

Select the best choice.

100%

Previous

Next

Review All

Save Session

End Exam

Mark

Item 13 of 43 (Exam A, Q473)

[Show Answer](#)[Calculator](#)

What are two ways to force the selection of a root bridge in a network that is running the 802.1D protocol? (Choose two.)

- A. spanning tree vlan all root
- B. spanning-tree vlan vlan-id priority 65535
- C. spanning-tree vlan vlan-id root
- D. spanning-tree vlan vlan-id priority 0
- E. spanning-tree vlan vlan-id force root

Select all that apply.

100%

[Previous](#)[Next](#)[Review All](#) ▼[Save Session](#)[End Exam](#)

Mark

Item 13 of 43 (Exam A, Q473)

[Hide Answer](#)[Calculator](#)

What are two ways to force the selection of a root bridge in a network that is running the 802.1D protocol? (Choose two.)

- A. `spanning tree vlan all root`
- B. `spanning-tree vlan vlan-id priority 65535`
- C. `spanning-tree vlan vlan-id root`
- D. `spanning-tree vlan vlan-id priority 0`
- E. `spanning-tree vlan vlan-id force root`

Answer: CD
Section: STP

Select all that apply.

100%

[Previous](#)[Next](#)[Review All](#) ▼[Save Session](#)[End Exam](#)

Mark

Item 14 of 43 (Exam A, Q39)

Show Answer

Calculator

Which Statement is true about TCN (802.1D) Propagation?

- A. The originator of the TCN immediately floods this information through the network
- B. the TCN propagation is a two step process
- C. A TCN is generated and sent to the root bridge
- D. the root bridge must flood this information through the network

Select the best choice.

100%

Previous

Next

Review All



Save Session

End Exam

Mark

Item 14 of 43 (Exam A, Q39)

Hide Answer

Calculator

Which Statement is true about TCN (802.1D) Propagation?

- A. The originator of the TCN immediately floods this information through the network
- B. the TCN propagation is a two step process
- C. A TCN is generated and sent to the root bridge
- D. the root bridge must flood this information through the network

Answer: C
Section: STP

Select the best choice.

100%

Previous

Next

Review All



Save Session

End Exam

Mark

Item 15 of 43 (Exam A, Q229)

[Show Answer](#)[Calculator](#)

Network A has a spanning-tree problem in which the traffic is selecting a longer path. How is the path cost calculated?

- A. number of hops
- B. priority of the bridge
- C. interface bandwidth
- D. interface delay
- E. None of the above

Select the best choice.

100%

[Previous](#)[Next](#)[Review All](#) ▼[Save Session](#)[End Exam](#)

Mark

Item 15 of 43 (Exam A, Q229)

Hide Answer

Calculator

Network A has a spanning-tree problem in which the traffic is selecting a longer path. How is the path cost calculated?

- A. number of hops
- B. priority of the bridge
- C. interface bandwidth
- D. interface delay
- E. None of the above

Answer: C
Section: STP

Select the best choice.

100%

Previous

Next

Review All

Save Session

End Exam

Mark

Item 16 of 43 (Exam A, Q134)

[Show Answer](#)[Calculator](#)

What two features in Cisco switches help prevent Layer 2 loops? (Choose two.)

- A. UniDirectional Link Detection
- B. Hot Standby Router Protocol
- C. Virtual Router Redundancy Protocol
- D. PortFast
- E. root guard
- F. loop guard

Select all that apply.

100%

[Previous](#)[Next](#)[Review All](#) ▼[Save Session](#)[End Exam](#)

Mark

Item 16 of 43 (Exam A, Q134)

[Hide Answer](#)[Calculator](#)

What two features in Cisco switches help prevent Layer 2 loops? (Choose two.)

- A. UniDirectional Link Detection
- B. Hot Standby Router Protocol
- C. Virtual Router Redundancy Protocol
- D. PortFast
- E. root guard
- F. loop guard

Answer: AF
Section: STP

Select all that apply.

100%

[Previous](#)[Next](#)[Review All](#) ▼[Save Session](#)[End Exam](#)

Mark

Item 17 of 43 (Exam A, Q102)

[Show Answer](#)[Calculator](#)

If a port configured with STP loop guard stops receiving BPDUs, the port will be put into which state?

- A. learning state
- B. listening state
- C. forwarding state
- D. root-inconsistent state

Select the best choice.

100%

[Previous](#)[Next](#)[Review All](#) ▼[Save Session](#)[End Exam](#)

Mark

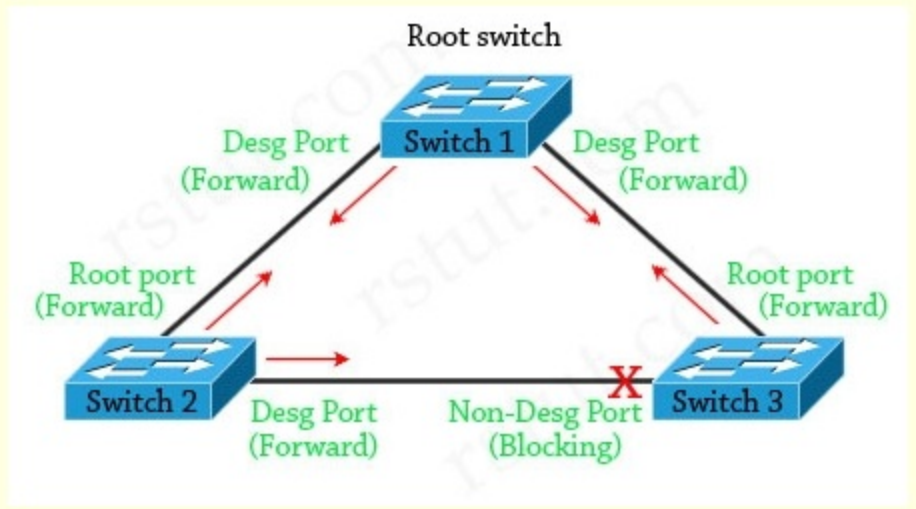
D. root-inconsistent state

Answer: D

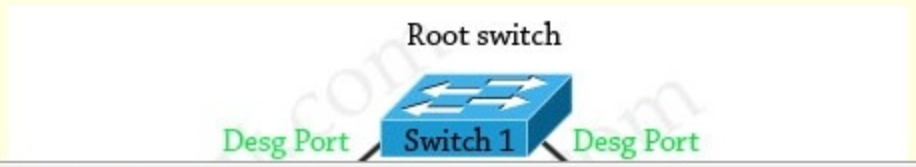
Section: STP

Loop Guard protects a switch trunk port from causing loops. It prevents switch ports from wrongly moving from a blocking state to a forwarding state when a unidirectional link exists in the network. Unidirectional links are simply links for which one of the two transmission paths on the link has failed, but not both. This can happen as a result of miscabling, cutting one fiber cable, unplugging one fiber or other reasons. Let's consider an example.

The network consists of 3 switches without Loop Guard feature. Switch 1 is the root switch. A port on Switch 3 is in blocking state, other ports are forwarding normally.



Suppose that Switch 3 does not receive BPDUs (Hellos) from Switch 2 due to unidirectional link failure on the link between switch 2 and switch 3. Switch 3 then transitions to forwarding state, and now all trunks on all switches are forwarding. Well, we have a loop!

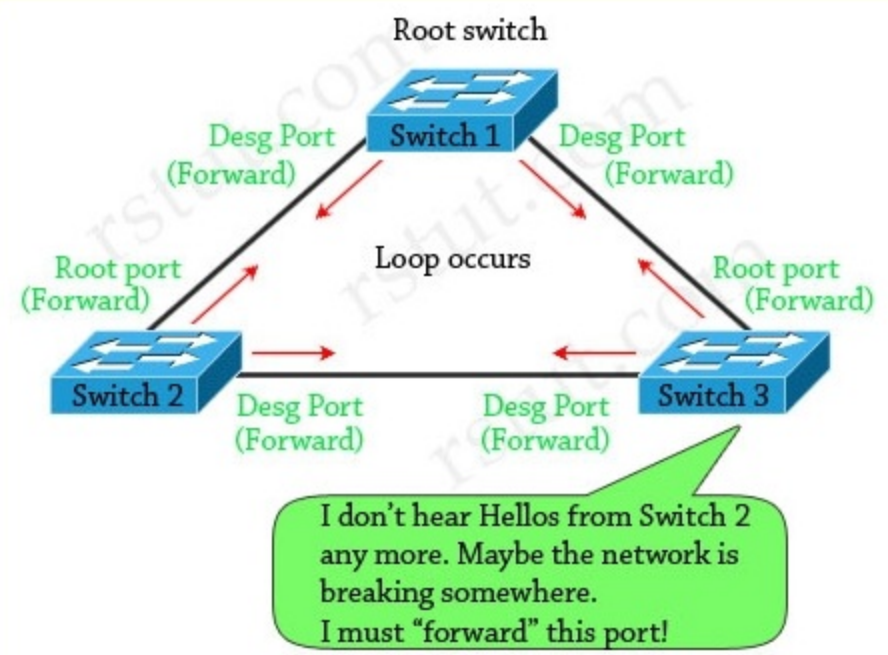


Select the best choice.

Mark



Suppose that Switch 3 does not receive BPDUs (Hellos) from Switch 2 due to unidirectional link failure on the link between switch 2 and switch 3. Switch 3 then transitions to forwarding state, and now all trunks on all switches are forwarding. Well, we have a loop!



With Loop Guard feature turned on, the blocking port on switch 3 will not transition to forwarding state but will fall into an STP loop-inconsistent state (same as blocking state).

(Reference: http://www.cisco.com/en/US/tech/tk389/tk621/technologies_tech_note09186a0080094640.shtml & CCIE Routing and Switching Official Exam Certification)

Select the best choice.

Mark

Item 18 of 43 (Exam A, Q297)

[Show Answer](#)[Calculator](#)

Which two statements are true about 802.1s? (Choose two.)

- A. 802.1s supports a reduced number of spanning-tree instances.
- B. 802.1s has better convergence times than 802.1w.
- C. 802.1s does not support load balancing over the same physical topology.
- D. The CPU utilization for 802.1s is lower than the CPU utilization for 802.1w.

Select all that apply.

100%

[Previous](#)[Next](#)[Review All](#) ▼[Save Session](#)[End Exam](#)

Mark

Item 18 of 43 (Exam A, Q297)

Hide Answer

Calculator

Which two statements are true about 802.1s? (Choose two.)

- A. 802.1s supports a reduced number of spanning-tree instances.
- B. 802.1s has better convergence times than 802.1w.
- C. 802.1s does not support load balancing over the same physical topology.
- D. The CPU utilization for 802.1s is lower than the CPU utilization for 802.1w.

Answer: AD

Section: STP

Select all that apply.

100%



Previous

Next

Review All



Save Session

End Exam

Mark

Item 19 of 43 (Exam A, Q252)

[Show Answer](#)[Calculator](#)

Refer to the following descriptions, which three are true about Cisco spanning-tree features? (Choose three.)

- A. RPVST+ converges faster than RSTP during a topology change.
- B. STP BPDUs are relayed by all non-root bridges and RSTP BPDUs are generated by each bridge.
- C. RSTP can only achieve rapid transition to Forwarding on edge ports and on point-to-point links.
- D. RPVST+ and RSTP are both based upon the IEEE 802.1w specification.

Select all that apply.

100%

[Previous](#)[Next](#)[Review All](#) ▼[Save Session](#)[End Exam](#)

Mark

Item 19 of 43 (Exam A, Q252)

Hide Answer

Calculator

Refer to the following descriptions, which three are true about Cisco spanning-tree features? (Choose three.)

- A. RPVST+ converges faster than RSTP during a topology change.
- B. STP BPDUs are relayed by all non-root bridges and RSTP BPDUs are generated by each bridge.
- C. RSTP can only achieve rapid transition to Forwarding on edge ports and on point-to-point links.
- D. RPVST+ and RSTP are both based upon the IEEE 802.1w specification.

Answer: BCD
Section: STP

Select all that apply.

100%

Previous

Next

Review All



Save Session

End Exam

Mark

Item 20 of 43 (Exam A, Q299)

[Show Answer](#)[Calculator](#)

Which two statements best describe spanning-tree BPDU processing for a blocking port? (Choose two.)

- A. BPDUs that enter a blocking port are discarded.
- B. BPDUs that enter a blocking port are processed.
- C. Loopguard puts an interface into a loop-inconsistent state when BPDUs stop being received on a blocking port.
- D. BPDUs are only processed on forwarding ports.

Select all that apply.

100%

[Previous](#)[Next](#)[Review All](#) ▼[Save Session](#)[End Exam](#)

Mark

Item 20 of 43 (Exam A, Q299)

[Hide Answer](#)[Calculator](#)

Which two statements best describe spanning-tree BPDU processing for a blocking port? (Choose two.)

- A. BPDUs that enter a blocking port are discarded.
- B. BPDUs that enter a blocking port are processed.
- C. Loopguard puts an interface into a loop-inconsistent state when BPDUs stop being received on a blocking port.
- D. BPDUs are only processed on forwarding ports.

Answer: BC
Section: STP

Select all that apply.

100%

[Previous](#)[Next](#)[Review All](#) ▼[Save Session](#)[End Exam](#)

Mark

Item 21 of 43 (Exam A, Q244)

[Show Answer](#)[Calculator](#)

As a network administrator, can you tell me what the root guard feature provides in a bridged network?

- A. It ensures that BPDUs sent by the root bridge are forwarded in a timely manner
- B. It enforces the root bridge placement in the network
- C. It ensures that all ports receiving BPDUs from the root bridge are in the forwarding state.
- D. It ensures that the bridge is elected as root bridge in the network.

Select the best choice.

100%

[Previous](#)[Next](#)[Review All](#) ▼[Save Session](#)[End Exam](#)

Mark

Item 21 of 43 (Exam A, Q244)

Hide Answer

Calculator

As a network administrator, can you tell me what the root guard feature provides in a bridged network?

- A. It ensures that BPDUs sent by the root bridge are forwarded in a timely manner
- B. It enforces the root bridge placement in the network
- C. It ensures that all ports receiving BPDUs from the root bridge are in the forwarding state.
- D. It ensures that the bridge is elected as root bridge in the network.

Answer: B
Section: STP

Select the best choice.

100%

Previous

Next

Review All

Save Session

End Exam

Mark

Item 22 of 43 (Exam A, Q131)

[Show Answer](#)[Calculator](#)

Which standard supports multiple instances of spanning tree?

- A. 802.1D
- B. 802.1s
- C. 802.1w
- D. 802.1z

Select the best choice.

100%

[Previous](#)[Next](#)[Review All](#) ▼[Save Session](#)[End Exam](#)

Mark

Item 22 of 43 (Exam A, Q131)

Hide Answer

Calculator

Which standard supports multiple instances of spanning tree?

- A. 802.1D
- B. 802.1s
- C. 802.1w
- D. 802.1z

Answer: B
Section: STP

Select the best choice.

100%

Previous

Next

Review All ▾

Save Session

End Exam

Mark

Item 23 of 43 (Exam A, Q177)

[Show Answer](#)[Calculator](#)

You have done a partial migration from 802.1D STP to 802.1w STP. Which of the following is true?

- A. 802.1D and 802.1w interoperate only when the 802.1D STP domain supports rapid convergence.
- B. Ports leading to 802.1D devices will run in compatibility mode, while the rest of the ports will run in 802.1w mode.
- C. This is an invalid configuration and a partial migration cannot be done.
- D. The bridge timers will be set to match the 802.1D devices.
- E. A secondary root bridge will always be populated within the 802.1D domain.
- F. If the root bridge is selected within the 802.1D domain, the whole STP domain will run in 802.1D compatibility mode.
- G. In partially migrated 802.1w networks, it is recommended to keep the STP diameter below 4.

Select the best choice.

100%

[Previous](#)[Next](#)[Review All](#) ▼[Save Session](#)[End Exam](#)

Mark

Item 23 of 43 (Exam A, Q177)

Hide Answer

Calculator

You have done a partial migration from 802.1D STP to 802.1w STP. Which of the following is true?

- A. 802.1D and 802.1w interoperate only when the 802.1D STP domain supports rapid convergence.
- B. Ports leading to 802.1D devices will run in compatibility mode, while the rest of the ports will run in 802.1w mode.
- C. This is an invalid configuration and a partial migration cannot be done.
- D. The bridge timers will be set to match the 802.1D devices.
- E. A secondary root bridge will always be populated within the 802.1D domain.
- F. If the root bridge is selected within the 802.1D domain, the whole STP domain will run in 802.1D compatibility mode.
- G. In partially migrated 802.1w networks, it is recommended to keep the STP diameter below 4.

Answer: B

Section: STP

IEEE 802.1w RSTP is designed to be compatible with IEEE 802.1d STP. Even if all the other devices in your network are using STP, you can enable RSTP on your switch, and even using the default configuration values, your switch will interoperate effectively with the STP devices. If any of the switch ports are connected to switches or bridges on your network that do not support RSTP, RSTP can still be used on this switch. RSTP automatically detects when the switch ports are connected to non-RSTP devices in the spanning tree and communicates with those devices using 802.1d STP BPDU packets.

Select the best choice.

100%

Previous

Next

Review All

Save Session

End Exam

Mark

Item 24 of 43 (Exam A, Q86)

[Show Answer](#)[Calculator](#)

When troubleshooting the issue, you notice the election of a new root bridge with an unknown MAC address. Knowing that all access ports have the PortFast feature enabled, what would be the easiest way to resolve the issue without losing redundant links?

- A. Enable bpduguard globally.
- B. Enable rootguard.
- C. Enable loopguard.
- D. Enable spanning tree.
- E. Enable UDLD.

Select the best choice.

100%

[Previous](#)[Next](#)[Review All](#) ▼[Save Session](#)[End Exam](#)

Mark

Item 24 of 43 (Exam A, Q86)

[Hide Answer](#)[Calculator](#)

When troubleshooting the issue, you notice the election of a new root bridge with an unknown MAC address. Knowing that all access ports have the PortFast feature enabled, what would be the easiest way to resolve the issue without losing redundant links?

- A. Enable bpduguard globally.
- B. Enable rootguard.
- C. Enable loopguard.
- D. Enable spanning tree.
- E. Enable UDLD.

Answer: A
Section: STP

Select the best choice.

100%

[Previous](#)[Next](#)[Review All](#) ▼[Save Session](#)[End Exam](#)