

Lead2pass Cisco 350-001



350-001 CCIE Routing and Switching Written Exam v4.0



Click the Begin button to start the exam.

100%

Begin

Mark

Show Answer

Calculator

Item 1 of 7 (Exam A, Q19)

Refer to the exhibit.

Which two statements are correct? (Choose two.)

```
Jun 5 12:55:44.359: %SEC-6-IPACCESSLOGP: list myacl permitted tcp 192.168.16.1 (38402) ->
192.168.16.2(23), 1 packet [0x723E6E12]
```

- A. The hexadecimal value of the number of packets that hit the access list is 0x723E6E12.
- B. The access list has logging enabled.
- C. The packet was discarded.
- D. The command ip access-list logging hash-generation is enabled.
- E. The Telnet connection is successfully set up.

Select all that apply.

100%



Previous

Next

Review All



Pause

Save Session

End Exam

Mark

Hide Answer

Calculator

Item 1 of 7 (Exam A, Q19)

Refer to the exhibit.  
Which two statements are correct? (Choose two.)

```
Jun 5 12:55:44.359: %SEC-6-IPACCESSLOGP: list myacl permitted tcp 192.168.16.1 (38402) ->
192.168.16.2(23), 1 packet [0x723E6E12]
```

- A. The hexadecimal value of the number of packets that hit the access list is 0x723E6E12.
- B. The access list has logging enabled.
- C. The packet was discarded.
- D. The command ip access-list logging hash-generation is enabled.
- E. The Telnet connection is successfully set up.

Answer: BD  
Section: ACLs

Select all that apply.

100%



Previous

Next

Review All



Pause

Save Session

End Exam

Mark

Time Remaining: 2:48:29

Item 2 of 7 (Exam A, Q76)

[Show Answer](#)[Calculator](#)

After applying a new ACL on a device, its CPU utilization rose significantly and many messages starting with

**"%SEC-6-IPACCESSLOG"**

appeared on the Syslog server. What can be done to resolve this situation?

- A. Increase memory allocation for ACLs.
- B. Remove all entries from the ACL and use a single permit ip any any statement.
- C. Remove the log keyword from each ACL entry.
- D. Reboot the device after the ACL has been applied.

Select the best choice.

100%

[Previous](#)[Next](#)[Review All](#) ▼[Pause](#)[Save Session](#)[End Exam](#)

Mark

Hide Answer

Calculator

Item 2 of 7 (Exam A, Q76)

After applying a new ACL on a device, its CPU utilization rose significantly and many messages starting with

**"%SEC-6-IPACCESSLOG"**

appeared on the Syslog server. What can be done to resolve this situation?

- A. Increase memory allocation for ACLs.
- B. Remove all entries from the ACL and use a single permit ip any any statement.
- C. Remove the log keyword from each ACL entry.
- D. Reboot the device after the ACL has been applied.

Answer: C  
Section: ACLs

Select the best choice.

100%



Previous

Next

Review All



Pause

Save Session

End Exam

Mark

Show Answer

Calculator

Item 3 of 7 (Exam A, Q189)

A request arrived on your MPLS-vpn-bgp group.  
Due to a security breach, your customer is experiencing DoS attacks coming from specific subnets (200.0.10.0/24, 200.0.12.0/24).  
You have checked all MPLS-EBGP routes being advertised to BHK from other VPN sites and found four subnets listed:

200.0.10.0/24, 200.0.11.0/24, 200.0.12.0/24, 200.0.13.0/24.

You immediately apply an outbound ACL filter using the appropriate MPLS-EBGP tool:

```
access-list 1 deny 200.0.10.0 255.255.254.0  
access-list 1 permit any
```

What happens when you apply this ACL on the MPLS-EBGP connection to BHK?

- A. It blocks all routes.
- B. It blocks the routes 200.0.12.0/24, 200.0.10.0/24 only.
- C. It blocks the routes 200.0.12.0/24, 200.0.13.0/24 only.
- D. It blocks the routes 200.0.10.0/24, 200.0.13.0/24 only.
- E. Nothing happens, no routes are blocked.

Select the best choice.

100%



Previous

Next

Review All



Pause

Save Session

End Exam

Mark

Hide Answer

Calculator

Item 3 of 7 (Exam A, Q189)

A request arrived on your MPLS-vpn-bgp group.  
Due to a security breach, your customer is experiencing DoS attacks coming from specific subnets (200.0.10.0/24, 200.0.12.0/24).  
You have checked all MPLS-EBGP routes being advertised to BHK from other VPN sites and found four subnets listed:

200.0.10.0/24, 200.0.11.0/24, 200.0.12.0/24, 200.0.13.0/24.

You immediately apply an outbound ACL filter using the appropriate MPLS-EBGP tool:

```
access-list 1 deny 200.0.10.0 255.255.254.0  
access-list 1 permit any
```

What happens when you apply this ACL on the MPLS-EBGP connection to BHK?

- A. It blocks all routes.
- B. It blocks the routes 200.0.12.0/24, 200.0.10.0/24 only.
- C. It blocks the routes 200.0.12.0/24, 200.0.13.0/24 only.
- D. It blocks the routes 200.0.10.0/24, 200.0.13.0/24 only.
- E. Nothing happens, no routes are blocked.

Answer: B

Section: ACLs

Remember, for the wild card mask, 1s are I DONT CARE, and 0s are I CARE. In the access-list we put an 0.0.0.0 255.255.254.255 network; of course 255 means "1111 1111". This means we don't care about any of the bits in the first, second & 4th octets. In fact, the number 0 (in 0.0.0.0) is just smallest numbers we can throw there and it is easy to type but we can use any number, it wouldn't matter, since I DONT CARE about them except the third octet as the wild card mask is not all "255".  
Now let's extract the 0 in the third octet in binary form (so easy, right?) 0 = 0000 0000  
With the 254 in the wildcard mask, we only care about the last bit of the third octet because 254 is "1111 1110".  
That means, if the third octet is in the form of xxxx xxx0 then it will match my access-list (x can be 0 or 1 because I DONT CARE).

Now let's write the third octet of 4 above subnets in binary form:

10 = 0000.1010

11 = 0000.1011

12 = 0000.1100

13 = 0000.1101

Select the best choice.

100%

Previous

Next

Review All

Pause

Save Session

End Exam

Mark

Show Answer

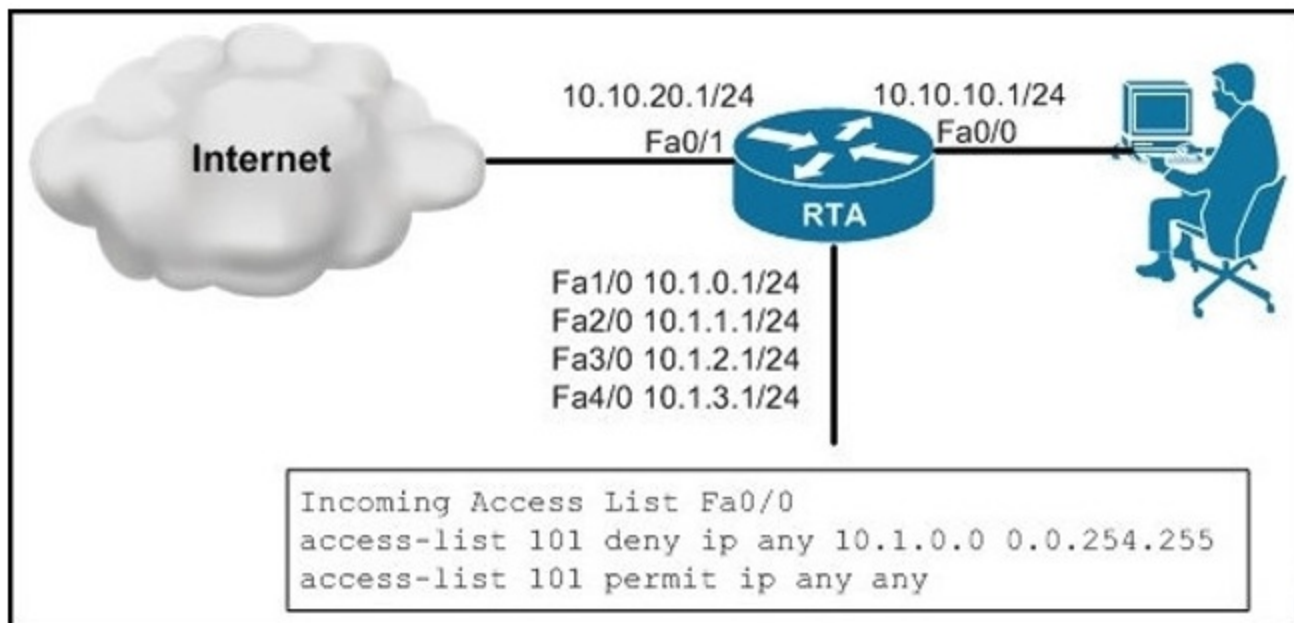
Calculator

Item 4 of 7 (Exam A, Q75)

Refer to the exhibit.

Clients that are connected to Fa0/0 of RTA are only allowed to connect to the Internet and networks, but not the networks on Fa1/0, Fa2/0, Fa3/0 and Fa4/0.

To achieve this, you have configured an ACL on RTA and applied it on the incoming direction of interface Fa0/0. After you apply this ACL, you learn that some of these networks are still accessible for clients that are connected to the 10.10.10.0/24 network. What is the correct ACL configuration to solve this issue?



- A. access-list 101 deny ip any 10.1.0.0 0.0.1.255  
access-list 101 permit ip any any
- B. access-list 101 permit ip any 10.1.0.0 0.0.1.255  
access-list 101 deny ip any any
- C. access-list 101 deny ip any 10.1.0.0 0.0.252.255  
access-list 101 permit ip any any
- D. access-list 101 deny ip any 10.1.0.0 0.0.3.255  
access-list 101 permit ip any any

Select the best choice.

100%

Previous

Next

Review All

Pause

Save Session

End Exam

Mark

Hide Answer

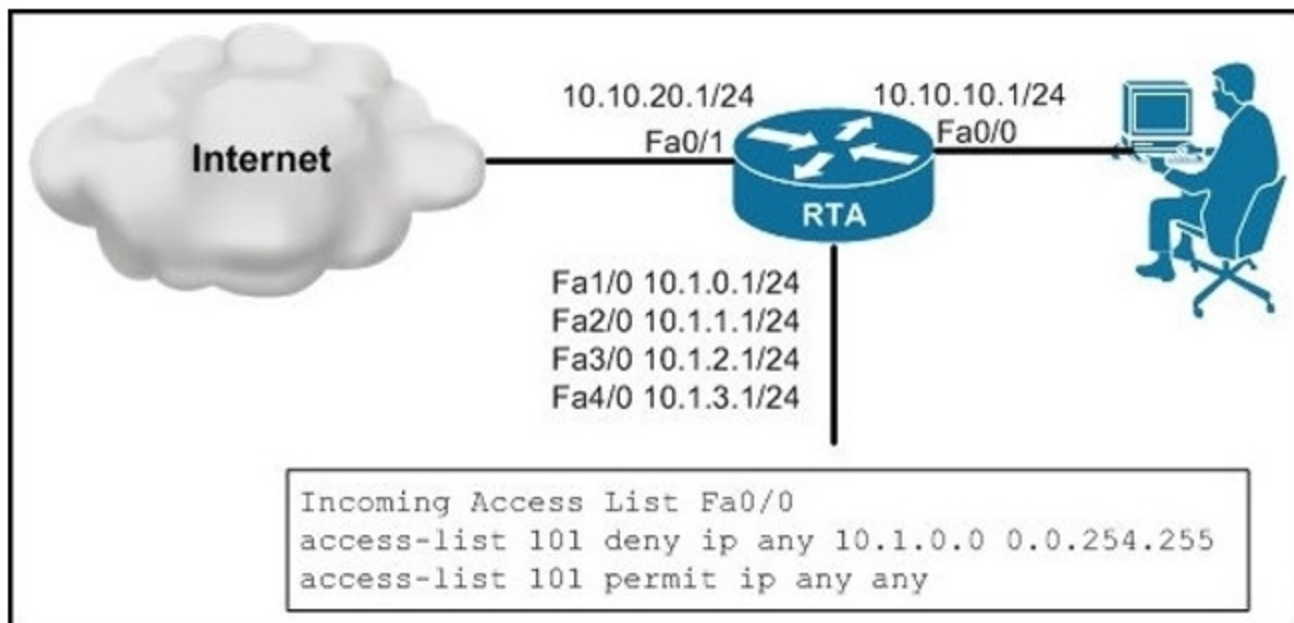
Calculator

Item 4 of 7 (Exam A, Q75)

Refer to the exhibit.

Clients that are connected to Fa0/0 of RTA are only allowed to connect to the Internet and networks, but not the networks on Fa1/0, Fa2/0, Fa3/0 and Fa4/0.

To achieve this, you have configured an ACL on RTA and applied it on the incoming direction of interface Fa0/0. After you apply this ACL, you learn that some of these networks are still accessible for clients that are connected to the 10.10.10.0/24 network. What is the correct ACL configuration to solve this issue?



- A. `access-list 101 deny ip any 10.1.0.0 0.0.1.255`  
`access-list 101 permit ip any any`
- B. `access-list 101 permit ip any 10.1.0.0 0.0.1.255`  
`access-list 101 deny ip any any`
- C. `access-list 101 deny ip any 10.1.0.0 0.0.252.255`  
`access-list 101 permit ip any any`
- D. `access-list 101 deny ip any 10.1.0.0 0.0.3.255`  
`access-list 101 permit ip any any`

Select the best choice.

100%

Previous

Next

Review All

Pause

Save Session

End Exam

Mark

Time Remaining: 2:46:12

Item 5 of 7 (Exam A, Q232)

[Show Answer](#)[Calculator](#)

What keywords do you need to the access-list to provide to the logging message like source address and source mac address?

- A. Log
- B. Log-input
- C. Log-output
- D. Logging

Select the best choice.

100%

[Previous](#)[Next](#)[Review All](#) ▼[Pause](#)[Save Session](#)[End Exam](#)

Mark

Time Remaining: 2:45:58

Item 5 of 7 (Exam A, Q232)

Hide Answer

Calculator

What keywords do you need to the access-list to provide to the logging message like source address and source mac address?

- A. Log
- B. Log-input
- C. Log-output
- D. Logging

Answer: B  
Section: ACLs

Select the best choice.

100% 

Previous

Next

Review All



Pause

Save Session

End Exam

Mark

Time Remaining: 2:45:43

Item 6 of 7 (Exam A, Q96)

[Show Answer](#)[Calculator](#)

What is the purpose of an explicit "deny any" statement at the end of an ACL?

- A. none, since it is implicit
- B. to enable Cisco IOS IPS to work properly; however, it is the deny all traffic entry that is actually required
- C. to enable Cisco IOS Firewall to work properly; however, it is the deny all traffic entry that is actually required
- D. to allow the log option to be used to log any matches
- E. to prevent sync flood attacks
- F. to prevent half-opened TCP connections

Select the best choice.

100%

[Previous](#)[Next](#)[Review All](#) ▼[Pause](#)[Save Session](#)[End Exam](#)

Mark

Time Remaining: 2:44:54

Item 6 of 7 (Exam A, Q96)

Hide Answer

Calculator

What is the purpose of an explicit "deny any" statement at the end of an ACL?

- A. none, since it is implicit
- B. to enable Cisco IOS IPS to work properly; however, it is the deny all traffic entry that is actually required
- C. to enable Cisco IOS Firewall to work properly; however, it is the deny all traffic entry that is actually required
- D. to allow the log option to be used to log any matches
- E. to prevent sync flood attacks
- F. to prevent half-opened TCP connections

Answer: D  
Section: ACLs

Select the best choice.

100%

Previous

Next

Review All ▾

Pause

Save Session

End Exam

Mark

Show Answer

Calculator

Item 7 of 7 (Exam A, Q324)

Refer to the exhibit. Which two statements are correct? (Choose two.)

```
Jun 5 12:55:44.359: %SEC-6-IPACCESSLOGP: list myacl permitted tcp 192.168.16.1(38402) ->
192.168.16.2(23), 1 packet (tag = Private)
```

- A. The packet is received on the private interface.
- B. Zone-Based Firewall is configured on the router.
- C. Logging is enabled for the access list.
- D. Private is an identification of that ACE.
- E. The Telnet connection is successfully set up.

Select all that apply.

100%



Previous

Next

Review All ▾

Pause

Save Session

End Exam

Mark

Hide Answer

Calculator

Item 7 of 7 (Exam A, Q324)

Refer to the exhibit. Which two statements are correct? (Choose two.)

```
Jun 5 12:55:44.359: %SEC-6-IPACCESSLOGP: list myacl permitted tcp 192.168.16.1(38402) ->
192.168.16.2(23), 1 packet (tag = Private)
```

- A. The packet is received on the private interface.
- B. Zone-Based Firewall is configured on the router.
- C. Logging is enabled for the access list.
- D. Private is an identification of that ACE.
- E. The Telnet connection is successfully set up.

Answer: CD  
Section: ACLs

Select all that apply.

100%



Previous

Next

Review All



Pause

Save Session

End Exam

Mark

Time Remaining: 2:49:55

Item 1 of 38 (Exam A, Q52)

Show Answer

Calculator

How will EIGRPv6 react if there is an IPv6 subnet mask mismatch between the Global Unicast addresses on a point-to-point link?

- A. EIGRPv6 will form a neighbor relationship.
- B. EIGRPv6 will not form a neighbor relationship.
- C. EIGRPv6 will form a neighbor relationship, but with the log MSG: "EIGRPv6 neighbor not on a common subnet."
- D. EIGRPv6 will form a neighbor relationship, but routes learned from that neighbor will not be installed in the routing table.

Select the best choice.

100% 

Previous

Next

Review



Pause

Save Session

End Exam

Mark

Hide Answer

Calculator

Item 1 of 38 (Exam A, Q52)

How will EIGRPv6 react if there is an IPv6 subnet mask mismatch between the Global Unicast addresses on a point-to-point link?

- A. EIGRPv6 will form a neighbor relationship.
- B. EIGRPv6 will not form a neighbor relationship.
- C. EIGRPv6 will form a neighbor relationship, but with the log MSG: "EIGRPv6 neighbor not on a common subnet."
- D. EIGRPv6 will form a neighbor relationship, but routes learned from that neighbor will not be installed in the routing table.

Answer: A  
Section: EIGRP

Select the best choice.

100%



Previous

Next

Review



Pause

Save Session

End Exam

Mark

Time Remaining: 2:49:26

Item 2 of 38 (Exam A, Q424)

[Show Answer](#)[Calculator](#)

By default, EIGRP will use which percentage of bandwidth on an interface?

- A. 10%
- B. 25%
- C. 50%
- D. 75%
- E. 80%
- F. 100%

Select the best choice.

100%

[Previous](#)[Next](#)[Review](#) ▼[Pause](#)[Save Session](#)[End Exam](#)

Mark

Hide Answer

Calculator

Item 2 of 38 (Exam A, Q424)

By default, EIGRP will use which percentage of bandwidth on an interface?

- A. 10%
- B. 25%
- C. 50%
- D. 75%
- E. 80%
- F. 100%

Answer: C  
Section: EIGRP

Select the best choice.

100%



Previous

Next

Review



Pause

Save Session

End Exam

Mark

Time Remaining: 2:49:07

Item 3 of 38 (Exam A, Q257)

Show Answer

Calculator

Two routers are connected by a serial link, and are configured to run EIGRP on all interfaces.

You examine the EIGRP neighbor table on both routers (using the `show ip eigrp neighbor` command) and see that the router connected over the serial link is listed as a neighbor for a certain amount of time, but is periodically removed from the neighbor table. None of the routes from the neighbor ever seem to be learned, and the neighbor transmission statistics (SRTT, RTO, and Q Count) seem to indicate that no packets are being transmitted between the neighbors. Which would most likely cause this problem?

- A. While multicast packets are being successfully sent over the link, unicast packets are not
- B. There is a bug in the EIGRP code that needs to be fixed.
- C. This is correct behavior for the first few minutes of EIGRP neighbor formation. After four or five cycles, it should straighten itself out and the neighbor
- D. The hello or hold intervals are set differently on the two routers.

Select the best choice.

100% 

Previous

Next

Review



Pause

Save Session

End Exam

Mark

Hide Answer

Calculator

Item 3 of 38 (Exam A, Q257)

Two routers are connected by a serial link, and are configured to run EIGRP on all interfaces.

You examine the EIGRP neighbor table on both routers (using the `show ip eigrp neighbor` command) and see that the router connected over the serial link is listed as a neighbor for a certain amount of time, but is periodically removed from the neighbor table. None of the routes from the neighbor ever seem to be learned, and the neighbor transmission statistics (SRTT, RTO, and Q Count) seem to indicate that no packets are being transmitted between the neighbors. Which would most likely cause this problem?

- A. While multicast packets are being successfully sent over the link, unicast packets are not
- B. There is a bug in the EIGRP code that needs to be fixed.
- C. This is correct behavior for the first few minutes of EIGRP neighbor formation. After four or five cycles, it should straighten itself out and the neighbor
- D. The hello or hold intervals are set differently on the two routers.

Answer: A

Section: EIGRP

Select the best choice.

100%



Previous

Next

Review



Pause

Save Session

End Exam

Mark

Time Remaining: 2:48:41

Item 4 of 38 (Exam A, Q225)

Show Answer

Calculator

In your Cisco EIGRP network, you notice that the neighbor relationship between two of your routers was recently restarted. Which two of these choices could have made this occur? (Choose two.)

- A. An update packet with init flag set from a known, already established neighbor relationship was received by one of the routers.
- B. The ARP cache was cleared.
- C. The counters were cleared.
- D. The IP EIGRP neighbor relationship was cleared manually.

Select all that apply.

100%

Previous

Next

Review



Pause

Save Session

End Exam

Mark

Time Remaining: 2:48:24

Item 4 of 38 (Exam A, Q225)

Hide Answer

Calculator

In your Cisco EIGRP network, you notice that the neighbor relationship between two of your routers was recently restarted. Which two of these choices could have made this occur? (Choose two.)

- A. An update packet with init flag set from a known, already established neighbor relationship was received by one of the routers.
- B. The ARP cache was cleared.
- C. The counters were cleared.
- D. The IP EIGRP neighbor relationship was cleared manually.

Answer: AD

Section: EIGRP

Select all that apply.

100% 

Previous

Next

Review



Pause

Save Session

End Exam

Mark

Time Remaining: 2:48:12

Item 5 of 38 (Exam A, Q267)

[Show Answer](#)[Calculator](#)

As a network engineer, your responsibility is to install, configure, operate, and troubleshoot networks.

In your company's network, EIGRP is the routing protocol.

You have just discovered that two routers restarted the neighbor relationship. Why? (Select two.)

- A. An update packet with init flag set from a known, already established neighbor relationship was received by one of the routers.
- B. The counters were deleted.
- C. The ARP cache was removed.
- D. The IP EIGRP neighbor relationship was cleared manually.

Select all that apply.

100%

[Previous](#)[Next](#)[Review](#) ▼[Pause](#)[Save Session](#)[End Exam](#)

Mark

Time Remaining: 2:48:00

Item 5 of 38 (Exam A, Q267)

Hide Answer

Calculator

As a network engineer, your responsibility is to install, configure, operate, and troubleshoot networks.

In your company's network, EIGRP is the routing protocol.

You have just discovered that two routers restarted the neighbor relationship. Why? (Select two.)

- A. An update packet with init flag set from a known, already established neighbor relationship was received by one of the routers.
- B. The counters were deleted.
- C. The ARP cache was removed.
- D. The IP EIGRP neighbor relationship was cleared manually.

Answer: AD

Section: EIGRP

Select all that apply.

100%

Previous

Next

Review ▾

Pause

Save Session

End Exam

Mark

Show Answer

Calculator

Item 6 of 38 (Exam A, Q78)

Refer to the exhibit.  
What can be done to remove the summary routes to Null0 on R3?

```
R3#show ip route
...
Gateway of last resort is not set

    209.165.200.0/24 is variably subnetted, 2 subnets, 2 masks
C       209.165.200.224/27 is directly connected, Serial0/0/0
D       209.165.200.0/24 is a summary, 00:01:27, Null0
    209.165.201.0/27 is subnetted, 1 subnets
D       209.165.201.0 [90/20514560] via 209.165.200.242, 20:41:09, Serial0/0/0
    209.165.202.0/24 is variably subnetted, 2 subnets, 2 masks
C       209.165.202.128/27 is directly connected, FastEthernet0/0
D       209.165.202.0/24 is a summary, 00:01:27, Null0

R3#show ip eigrp neighbors
IP-EIGRP neighbors for process 100
H   Address                Interface           Hold Uptime    SRTT   RTO  Q  Seq
                               (sec)           (ms)          Cnt  Num
1   209.165.202.155         Fa0/0              10 00:23:31    1    200  0   7
0   209.165.200.242         Se0/0/0            158 20:41:25  211  1266  0  67
```

- A. Configure the EIGRP routing subcommand no auto-summary on 209.165.202.155.
- B. Configure the EIGRP routing subcommand no auto-summary on 209.165.202.24.
- C. Configure the EIGRP routing subcommand no auto-summary on both 209.165.202.155 and 209.165.202.242.
- D. Configure the EIGRP routing subcommand no auto-summary on R3.

Select the best choice.

100%



Previous

Next

Review



Pause

Save Session

End Exam

Mark

Hide Answer

Calculator

Item 6 of 38 (Exam A, Q78)

Refer to the exhibit.  
What can be done to remove the summary routes to Null0 on R3?

```
R3#show ip route
...
Gateway of last resort is not set

    209.165.200.0/24 is variably subnetted, 2 subnets, 2 masks
C       209.165.200.224/27 is directly connected, Serial0/0/0
D       209.165.200.0/24 is a summary, 00:01:27, Null0
    209.165.201.0/27 is subnetted, 1 subnets
D       209.165.201.0 [90/20514560] via 209.165.200.242, 20:41:09, Serial0/0/0
    209.165.202.0/24 is variably subnetted, 2 subnets, 2 masks
C       209.165.202.128/27 is directly connected, FastEthernet0/0
D       209.165.202.0/24 is a summary, 00:01:27, Null0

R3#show ip eigrp neighbors
IP-EIGRP neighbors for process 100
H   Address                Interface           Hold Uptime    SRTT   RTO  Q  Seq
                               (sec)           (ms)          Cnt  Num
1   209.165.202.155         Fa0/0              10 00:23:31    1    200  0   7
0   209.165.200.242         Se0/0/0            158 20:41:25   211  1266  0  67
```

- A. Configure the EIGRP routing subcommand no auto-summary on 209.165.202.155.
- B. Configure the EIGRP routing subcommand no auto-summary on 209.165.202.24.
- C. Configure the EIGRP routing subcommand no auto-summary on both 209.165.202.155 and 209.165.202.242.
- D. Configure the EIGRP routing subcommand no auto-summary on R3.

Answer: D  
Section: EIGRP

Select the best choice.

100%

Previous

Next

Review

Pause

Save Session

End Exam

Mark

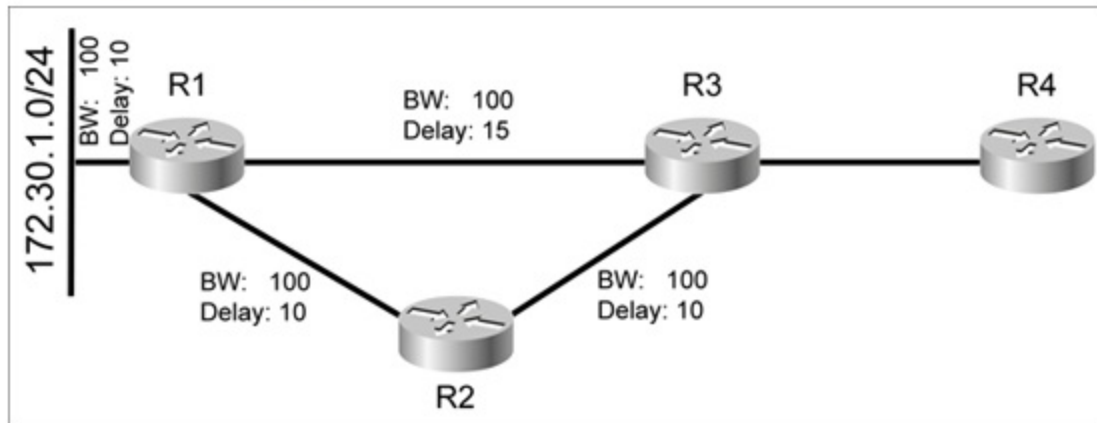
Show Answer

Calculator

Item 7 of 38 (Exam A, Q66)

Refer to the exhibit.

Assuming that the routing protocol for this network is EIGRP, if the link between R1 and R3 failed, what would R4 receive from R3?



- A. R4 would receive an update noting R3's higher cost to reach 172.30.1.0/24.
- B. R4 would not receive any updates or queries, since R3 would simply move to the path through R2.
- C. R4 would receive a query, since R3 would mark 172.30.1.0/24 as active when the link between R1 and R4 failed.
- D. R4 would not receive any packets, since R3 is not using the link to R1 to reach 172.30.1.0/24.

Select the best choice.

100%

Previous

Next

Review

Pause

Save Session

End Exam

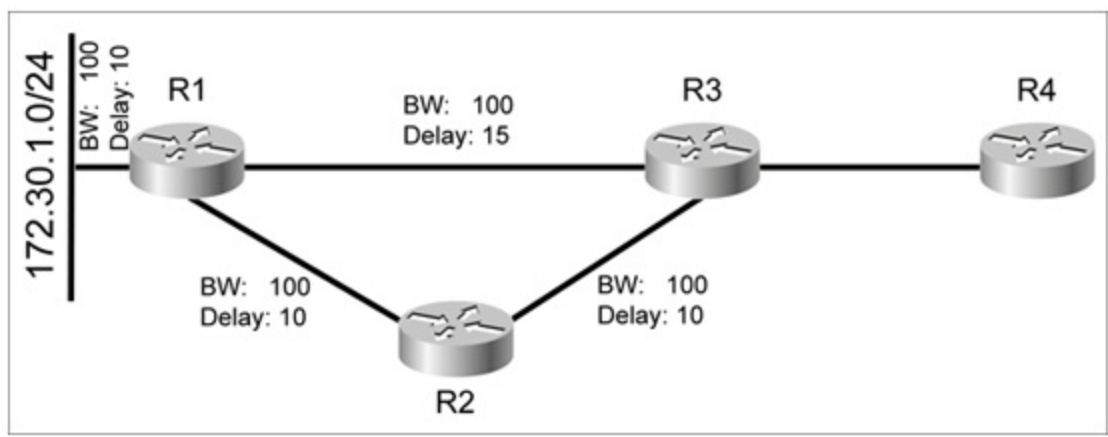
Mark

Hide Answer

Calculator

Item 7 of 38 (Exam A, Q66)

Refer to the exhibit.  
Assuming that the routing protocol for this network is EIGRP, if the link between R1 and R3 failed, what would R4 receive from R3?



- A. R4 would receive an update noting R3's higher cost to reach 172.30.1.0/24.
- B. R4 would not receive any updates or queries, since R3 would simply move to the path through R2.
- C. R4 would receive a query, since R3 would mark 172.30.1.0/24 as active when the link between R1 and R4 failed.
- D. R4 would not receive any packets, since R3 is not using the link to R1 to reach 172.30.1.0/24.

Answer: A  
Section: EIGRP

Select the best choice.

100%

Mark

Show Answer

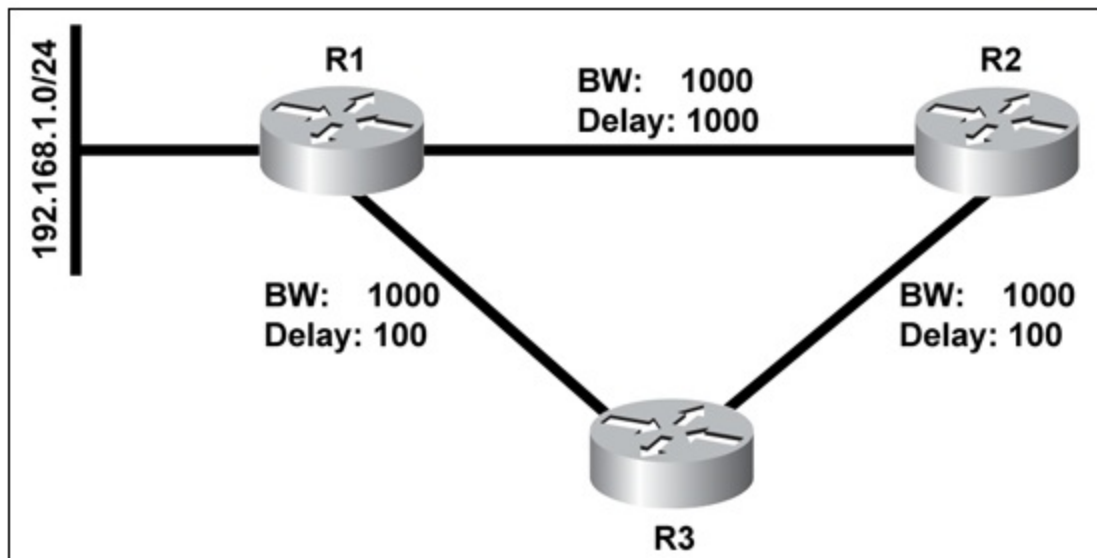
Calculator

Item 8 of 38 (Exam A, Q277)

Refer to the exhibit.

In this network R1 and R2 are both configured as EIGRP stub routers.

If the link between R1 and R3 failed, would R3 still be able to reach 192.168.1.0/24, and why or why not?



- A. No. R3 would remove its route to 192.168.1.0/24 through R1, but would not query R2 for an alternate route, since R2 is a stub.
- B. Yes. When a directly connected link fails, a router is allowed to query all neighbors, including stub neighbors, for an alternate route.
- C. Yes, because R3 would know about both routes, through R1 and R2, before the link between R1 and R3 failed.
- D. No. The path through R2 would always be considered a loop at R3.

Select the best choice.

100%



Previous

Next

Review



Pause

Save Session

End Exam

Mark

Hide Answer

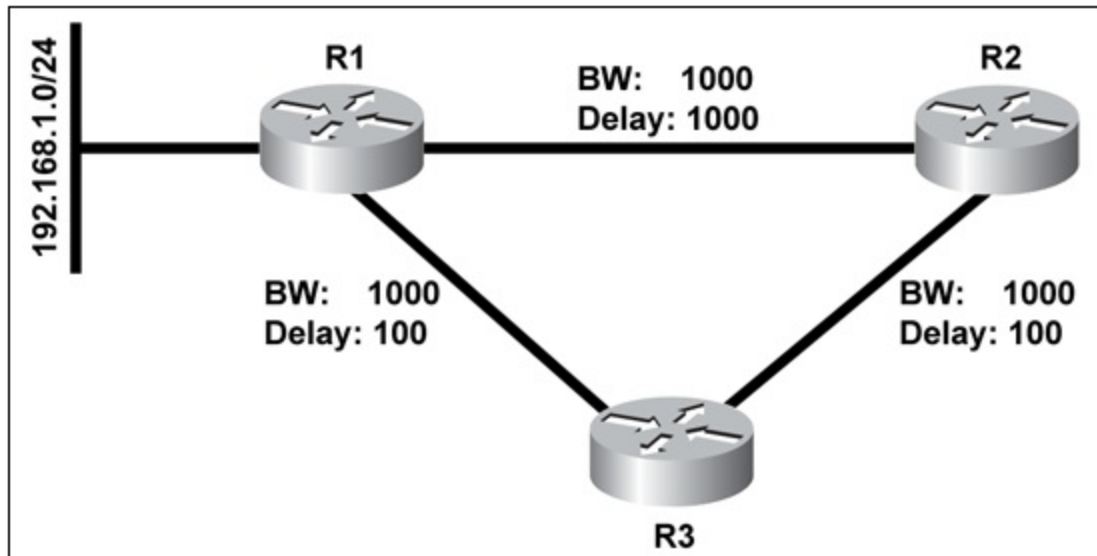
Calculator

Item 8 of 38 (Exam A, Q277)

Refer to the exhibit.

In this network R1 and R2 are both configured as EIGRP stub routers.

If the link between R1 and R3 failed, would R3 still be able to reach 192.168.1.0/24, and why or why not?



- A. No. R3 would remove its route to 192.168.1.0/24 through R1, but would not query R2 for an alternate route, since R2 is a stub.
- B. Yes. When a directly connected link fails, a router is allowed to query all neighbors, including stub neighbors, for an alternate route.
- C. Yes, because R3 would know about both routes, through R1 and R2, before the link between R1 and R3 failed.
- D. No. The path through R2 would always be considered a loop at R3.

Answer: A  
Section: EIGRP

Select the best choice.

100%

Previous

Next

Review

Pause

Save Session

End Exam

Mark

Show Answer

Calculator

Item 9 of 38 (Exam A, Q79)

Refer to the exhibit. R4 is configured as a receive-only EIGRP stub, and is adjacent with 209.165.202.139 (R3). However, R4 is not learning about network 209.165.201.0/27 from R3. What could be the cause of this issue?

```
R4#show ip route
...
Gateway of last resort is not set

    209.165.202.0/27 is subnetted, 1 subnets
C       209.165.202.128 is directly connected, FastEthernet0/0

R4#sh ip eigrp neighbor detail
IP-EIGRP neighbors for process 100
H   Address                Interface      Hold Uptime   SRTT   RTO  Q  Seq
   (sec)                    (ms)          (sec)         (ms)   Cnt  Num
0   209.165.202.139         Fa0/0         13 00:00:29   1     200  0  99
   Version 12.4/1.2, Retrans: 0, Retries: 0
   Receive-Only Peer Advertising ( No ) Routes

R3#show ip route eigrp
*   209.165.201.0/27 is subnetted, 1 subnets
D*   209.165.201.0 [90/20514560] via 209.165.200.242, 00:01:36, serial0/0/0
```

- A. R4 should learn this route from 209.165.200.242, and not from R3.
- B. R3 is configured as a receive-only EIGRP stub.
- C. R3 and R4 may be using different EIGRP process numbers.
- D. R3 and R4 are asymmetrically adjacent neighbors.

Select the best choice.

100%



Previous

Next

Review



Pause

Save Session

End Exam

Mark

Hide Answer

Calculator

Item 9 of 38 (Exam A, Q79)

Refer to the exhibit. R4 is configured as a receive-only EIGRP stub, and is adjacent with 209.165.202.139 (R3). However, R4 is not learning about network 209.165.201.0/27 from R3. What could be the cause of this issue?

```
R4#show ip route
...
Gateway of last resort is not set

    209.165.202.0/27 is subnetted, 1 subnets
C       209.165.202.128 is directly connected, FastEthernet0/0

R4#sh ip eigrp neighbor detail
IP-EIGRP neighbors for process 100
H   Address                Interface      Hold Uptime   SRTT   RTO  Q  Seq
   (sec)                    (ms)          (sec)         (ms)   Cnt  Num
0   209.165.202.139         Fa0/0         13 00:00:29   1     200  0  99
   Version 12.4/1.2, Retrans: 0, Retries: 0
   Receive-Only Peer Advertising ( No ) Routes

R3#show ip route eigrp
*   209.165.201.0/27 is subnetted, 1 subnets
D*   209.165.201.0 [90/20514560] via 209.165.200.242, 00:01:36, serial0/0/0
```

- A. R4 should learn this route from 209.165.200.242, and not from R3.
- B. R3 is configured as a receive-only EIGRP stub.
- C. R3 and R4 may be using different EIGRP process numbers.
- D. R3 and R4 are asymmetrically adjacent neighbors.

Answer: B  
Section: EIGRP

Select the best choice.

100%

Previous

Next

Review



Pause

Save Session

End Exam

Mark

Show Answer

Calculator

Item 10 of 38 (Exam A, Q165)

Refer to the exhibit.

Routers A and B are directly connected. Given the configuration, how many EIGRP routes will router B see in its routing table?

**Router A relevant configuration**

```
interface fa0/0
ip address 10.10.1.1 255.255.255.0

router eigrp 100
network 10.1.1.0 0.0.0.255
network 10.2.1.0 0.0.0.255
network 172.16.10.0 0.0.0.255
network 172.16.2.0 0.0.0.255
```

**Router B relevant configuration**

```
interface fa0/0
ip address 10.10.1.2 255.255.255.0

router eigrp 100
network 10.10.1.0 0.0.0.255
eigrp stub
```

- A. 0
- B. 1
- C. 2
- D. 3
- E. 4

Select the best choice.

100%



Previous

Next

Review



Pause

Save Session

End Exam

Mark

```
network 10.1.1.0 0.0.0.255
network 10.2.1.0 0.0.0.255
network 172.16.10.0 0.0.0.255
network 172.16.2.0 0.0.0.255

Router B relevant configuration
interface fa0/0
ip address 10.10.1.2 255.255.255.0

router eigrp 100
network 10.10.1.0 0.0.0.255
eigrp stub
```

- A. 0  
 B. 1  
 C. 2  
 D. 3  
 E. 4

Answer: A  
Section: EIGRP

In this question, router A does not advertise its "network 10.10.1.0 0.0.0.255" in the EIGRP process (the network connected with router B) so no EIGRP neighbor relationship is established between two routers. If we use the "show ip route" command on both routers, we just see a directly connected network 10.10.1.0/24 like this:

```
Gateway of last resort is not set

10.0.0.0/24 is subnetted, 1 subnets
C    10.10.1.0 is directly connected, FastEthernet0/0
```

For your information, even if we use the "network 10.10.1.0 0.0.0.255" in the EIGRP process of router A we still don't see any EIGRP route because router A does not have any interfaces belonging to networks 10.1.1.0/24, 10.2.1.0/24, 172.16.2.0/24 -> it will not advertise these networks to router B.

Select the best choice.

100%

Previous

Next

Review



Pause

Save Session

End Exam

Mark

Show Answer

Calculator

Item 11 of 38 (Exam A, Q339)

Refer to the exhibit.

The static route to 150.189.131.6 on R3 is intended to serve as the gateway of last resort for the EIGRP network.

However, while R3 installs the gateway of last resort, its EIGRP neighbor R4 does not. What might explain the problem?

```
R3#show running-config
...
router eigrp 100
 network 209.165.200.224 0.0.0.31
 network 209.165.202.128 0.0.0.31
 no auto-summary
!
ip route 0.0.0.0 0.0.0.0 150.189.131.6

R3#show ip route
...
Gateway of last resort is 150.189.131.6 to network 0.0.0.0

   209.165.200.0/27 is subnetted, 1 subnets
C    209.165.200.224 is directly connected, Serial0/0/0
   209.165.201.0/27 is subnetted, 1 subnets
D    209.165.201.0 [90/20560] via 209.165.200.242, Ser0/0/0
   209.165.202.0/27 is subnetted, 1 subnets
C    209.165.202.128 is directly connected, FastEthernet0/0
   150.189.0.0/24 is subnetted, 1 subnets
C    150.189.131.0 is directly connected, FastEthernet0/1
S*   0.0.0.0/0 [1/0] via 150.189.131.6

R4#show ip route
...
Gateway of last resort is not set

   209.165.200.0/27 is subnetted, 1 subnets
D    209.165.200.224
       [90/20514560] via 209.165.202.139, Fa0/0
   209.165.201.0/27 is subnetted, 1 subnets
D    209.165.201.0
       [90/20517120] via 209.165.202.139, Fa0/0
   209.165.202.0/27 is subnetted, 1 subnets
C    209.165.202.128 is directly connected, Fa0/0
```

- A. R3 is missing the global command ip default-network 150.189.131.6.
- B. Autosummary must be enabled on R3 in order for default-routes to be propagated.
- C. Default-networks must be configured individually on each EIGRP router.
- D. The static route on R3 must be redistributed into EIGRP.

Select the best choice.

100%



Previous

Next

Review



Pause

Save Session

End Exam

Mark

Hide Answer

Calculator

Item 11 of 38 (Exam A, Q339)

Refer to the exhibit.

The static route to 150.189.131.6 on R3 is intended to serve as the gateway of last resort for the EIGRP network.

However, while R3 installs the gateway of last resort, its EIGRP neighbor R4 does not. What might explain the problem?

```
R3#show running-config
...
router eigrp 100
 network 209.165.200.224 0.0.0.31
 network 209.165.202.128 0.0.0.31
 no auto-summary
!
ip route 0.0.0.0 0.0.0.0 150.189.131.6

R3#show ip route
...
Gateway of last resort is 150.189.131.6 to network 0.0.0.0

   209.165.200.0/27 is subnetted, 1 subnets
C    209.165.200.224 is directly connected, Serial0/0/0
   209.165.201.0/27 is subnetted, 1 subnets
D    209.165.201.0 [90/20560] via 209.165.200.242, Ser0/0/0
   209.165.202.0/27 is subnetted, 1 subnets
C    209.165.202.128 is directly connected, FastEthernet0/0
   150.189.0.0/24 is subnetted, 1 subnets
C    150.189.131.0 is directly connected, FastEthernet0/1
S*   0.0.0.0/0 [1/0] via 150.189.131.6

R4#show ip route
...
Gateway of last resort is not set

   209.165.200.0/27 is subnetted, 1 subnets
D    209.165.200.224
       [90/20514560] via 209.165.202.139, Fa0/0
   209.165.201.0/27 is subnetted, 1 subnets
D    209.165.201.0
       [90/20517120] via 209.165.202.139, Fa0/0
   209.165.202.0/27 is subnetted, 1 subnets
C    209.165.202.128 is directly connected, Fa0/0
```

- A. R3 is missing the global command `ip default-network 150.189.131.6`.
- B. Autosummary must be enabled on R3 in order for default-routes to be propagated.
- C. Default-networks must be configured individually on each EIGRP router.
- D. The static route on R3 must be redistributed into EIGRP.

Answer: D  
Section: EIGRP

Select the best choice.

100%

Previous

Next

Review

Pause

Save Session

End Exam

Mark

Show Answer

Calculator

Item 12 of 38 (Exam A, Q340)

Refer to the exhibit. Which statement would explain why R4 and R3 are unable to build an EIGRP adjacency?

```
R4#show ip protocols
Routing Protocol is "eigrp 100"
  Outgoing update filter list for all interfaces is not set
  Incoming update filter list for all interfaces is not set
  Default networks flagged in outgoing updates
  Default networks accepted from incoming updates
  EIGRP metric weight K1=1, K2=0, K3=1, K4=0, K5=0
  EIGRP maximum hopcount 100
  EIGRP maximum metric variance 1
  Redistributing: eigrp 100
  EIGRP NSF-aware route hold timer is 240s
  Automatic network summarization is not in effect
  Maximum path: 4
  Routing for Networks:
    209.165.202.128/27
  Routing Information Sources:
    Gateway         Distance      Last Update
  Distance: internal 90 external 170

R3#show ip protocols
Routing Protocol is "eigrp 100"
  Outgoing update filter list for all interfaces is not set
  Incoming update filter list for all interfaces is not set
  Default networks flagged in outgoing updates
  Default networks accepted from incoming updates
  EIGRP metric weight K1=1, K2=255, K3=1, K4=0, K5=0
  EIGRP maximum hopcount 100
  EIGRP maximum metric variance 1
  Redistributing: eigrp 100
  EIGRP NSF-aware route hold timer is 240s
  Automatic network summarization is not in effect
  Maximum path: 4
  Routing for Networks:
    209.165.200.224/28
    209.165.202.128/28
  Routing Information Sources:
    Gateway         Distance      Last Update
  Distance: internal 90 external 170
```

- A. The network masks on R4 (209.165.202.128/27) and R3 (209.165.202.128/28) are different.
- B. The local EIGRP process on R4 and R3 are the same (but they must be unique).
- C. The routing metrics on R4 and R3 are different.
- D. R4 is not routing for the network 209.165.200.224/28.

Select the best choice.

100%

Previous

Next

Review

Pause

Save Session

End Exam

Mark

Hide Answer

Calculator

Item 12 of 38 (Exam A, Q340)

Refer to the exhibit. Which statement would explain why R4 and R3 are unable to build an EIGRP adjacency?

```
R4#show ip protocols
Routing Protocol is "eigrp 100"
  Outgoing update filter list for all interfaces is not set
  Incoming update filter list for all interfaces is not set
  Default networks flagged in outgoing updates
  Default networks accepted from incoming updates
  EIGRP metric weight K1=1, K2=0, K3=1, K4=0, K5=0
  EIGRP maximum hopcount 100
  EIGRP maximum metric variance 1
  Redistributing: eigrp 100
  EIGRP NSF-aware route hold timer is 240s
  Automatic network summarization is not in effect
  Maximum path: 4
  Routing for Networks:
    209.165.202.128/27
  Routing Information Sources:
    Gateway         Distance      Last Update
  Distance: internal 90 external 170

R3#show ip protocols
Routing Protocol is "eigrp 100"
  Outgoing update filter list for all interfaces is not set
  Incoming update filter list for all interfaces is not set
  Default networks flagged in outgoing updates
  Default networks accepted from incoming updates
  EIGRP metric weight K1=1, K2=255, K3=1, K4=0, K5=0
  EIGRP maximum hopcount 100
  EIGRP maximum metric variance 1
  Redistributing: eigrp 100
  EIGRP NSF-aware route hold timer is 240s
  Automatic network summarization is not in effect
  Maximum path: 4
  Routing for Networks:
    209.165.200.224/28
    209.165.202.128/28
  Routing Information Sources:
    Gateway         Distance      Last Update
  Distance: internal 90 external 170
```

- A. The network masks on R4 (209.165.202.128/27) and R3 (209.165.202.128/28) are different.
- B. The local EIGRP process on R4 and R3 are the same (but they must be unique).
- C. The routing metrics on R4 and R3 are different.
- D. R4 is not routing for the network 209.165.200.224/28.

Answer: C  
Section: EIGRP

Select the best choice.

100%

Previous

Next

Review

Pause

Save Session

End Exam

Mark[Show Answer](#) [Calculator](#)

Item 13 of 38 (Exam A, Q80)

Refer to the exhibit.

R4 is a remote office router that is running EIGRP; the decision has been made to change EIGRP to use static EIGRP adjacencies. However, once the configuration change was applied, the adjacency between R4 and 209.165.202.139 (HQ) seems to disappear. What could be the cause of this issue?

```
R4#sh ip eigrp neighbors
IP-EIGRP neighbors for process 100
H   Address                Interface      Hold Uptime   SRTT   RTO  Q  Seq
   (sec)                   (ms)          (sec)         (ms)   Cnt  Num
0   209.165.202.139         Fa0/0         14 00:00:22   6      200  0  23

R4(config)#router eigrp 100
R4(config-router)#neighbor 209.165.202.139 fa0/0

*Nov 11 02:01:05.354: %DUAL-5-NBRCHANGE: IP-EIGRP(0) 100: Neighbor 209.165.202.139

R4#show ip eigrp neighbors
IP-EIGRP neighbors for process 100
```

- A. Static EIGRP neighbor configuration is symmetric; it causes the interface to stop processing inbound multicast packets and stop sending multicast packets.
- B. Static EIGRP neighbors are not displayed with the show ip eigrp neighbors command.
- C. A distance (internal 90 or external 170) must also be configured for the static neighbor.
- D. The neighbor 209.165.202.139 should be changed to run under EIGRP autonomous system 0.

Select the best choice.

100%

[Previous](#)[Next](#)[Review](#) ▼[Pause](#)[Save Session](#)[End Exam](#)

Mark

```
*Nov 11 02:01:05.354: %DUAL-5-NBRCHANGE: IP-EIGRP(0) 100: Neighbor 209.165.202.139
R4#show ip eigrp neighbors
IP-EIGRP neighbors for process 100
```

- A. Static EIGRP neighbor configuration is symmetric; it causes the interface to stop processing inbound multicast packets and stop sending multicast packets.
- B. Static EIGRP neighbors are not displayed with the show ip eigrp neighbors command.
- C. A distance (internal 90 or external 170) must also be configured for the static neighbor.
- D. The neighbor 209.165.202.139 should be changed to run under EIGRP autonomous system 0.

```
Answer: A
Section: EIGRP

R1#sh ip eigrp neigh
R1#sh ip eigrp neighbors
IP-EIGRP neighbors for process 100
H Address          Interface      Hold Uptime  SRTT  RTO  Q  Seq
  (sec)           (ms)    Cnt Num
0 209.165.202.139 Fa1/0         10 00:03:14 208 1872 0 7
R1#

R1#conf t
Enter configuration commands, one per line. End with CNTL/Z.
R1(config)#router eigrp 100
R1(config-router)#neighbor 209.165.202.139 fa1/0
R1(config-router)#
*Mar 1 00:31:42.343: %DUAL-5-NBRCHANGE: IP-EIGRP(0) 100: Neighbor 209.165.202.139 (FastEthernet1/0) is down: Static peer configured
R1(config-router)#

R1#
*Mar 1 00:31:49.051: %SYS-5-CONFIG_I: Configured from console by console
R1#sh ip eigrp neighbors
IP-EIGRP neighbors for process 100
R1#
```

Select the best choice.

100%

Mark

After a link flap in the network, which two EIGRP neighbors will not be queried for alternative paths? (Choose two.)

```
r13#show ip eigrp nei det
IP-EIGRP neighbors for process 100
H   Address                Interface      Hold   Uptime   SRTT   RTO   Q   Seq
   (sec) (ms)     Cnt     Num
 1   192.168.1.1             Et0/0         9999  00:20:26  9      200  0   9
   Version 12.4/1.2, Retrans: 0, Retries: 0, Prefixes: 1
 4   192.168.3.7             Et0/2         10    00:21:07  25     200  0   27
   Version 12.4/1.2, Retrans: 0, Retries: 0
   Stub Peer Advertising ( STATIC ) Routes
   Suppressing queries
 3   192.168.3.8             Et0/2         12    00:21:26  26     200  0   25
   Version 12.4/1.2, Retrans: 0, Retries: 0
   Stub Peer Advertising ( SUMMARY ) Routes
   Suppressing queries
 2   192.168.3.6             Et0/2         14    00:33:41  16     200  0   19
   Restart time 00:33:14
   Version 12.4/1.2, Retrans: 0, Retries: 0, Prefixes: 1
 0   192.168.2.1             Et0/1         9999  00:43:06  17     200  0   6
   Restart time 00:33:14
   Version 12.4/1.2, Retrans: 2, Retries: 0, Prefixes: 1
 5   192.168.3.9             Et0/2         11    00:33:41  16     200  0   19
   Restart time 00:33:14
   Version 12.4/1.2, Retrans: 0, Retries: 0, Prefixes: 1
```

- A. 192.168.1.1
- B. 192.168.3.7
- C. 192.168.3.8
- D. 192.168.3.6
- E. 192.168.2.1
- F. 192.168.3.9

Select all that apply.

100%

Previous

Next

Review



Pause

Save Session

End Exam

Mark

H	Address	Interface	Hold (sec)	Uptime (ms)	SRTT Cnt	RTO Num	Q	Seq
1	192.168.1.1	Et0/0	9999	00:20:26	9	200	0	9
Version 12.4/1.2, Retrans: 0, Retries: 0, Prefixes: 1								
4	192.168.3.7	Et0/2	10	00:21:07	25	200	0	27
Version 12.4/1.2, Retrans: 0, Retries: 0 Stub Peer Advertising ( STATIC ) Routes Suppressing queries								
3	192.168.3.8	Et0/2	12	00:21:26	26	200	0	25
Version 12.4/1.2, Retrans: 0, Retries: 0 Stub Peer Advertising ( SUMMARY ) Routes Suppressing queries								
2	192.168.3.6	Et0/2	14	00:33:41	16	200	0	19
Restart time 00:33:14 Version 12.4/1.2, Retrans: 0, Retries: 0, Prefixes: 1								
0	192.168.2.1	Et0/1	9999	00:43:06	17	200	0	6
Restart time 00:33:14 Version 12.4/1.2, Retrans: 2, Retries: 0, Prefixes: 1								
5	192.168.3.9	Et0/2	11	00:33:41	16	200	0	19
Restart time 00:33:14 Version 12.4/1.2, Retrans: 0, Retries: 0, Prefixes: 1								

- A. 192.168.1.1
- B. 192.168.3.7
- C. 192.168.3.8
- D. 192.168.3.6
- E. 192.168.2.1
- F. 192.168.3.9

Answer: BC  
Section: EIGRP

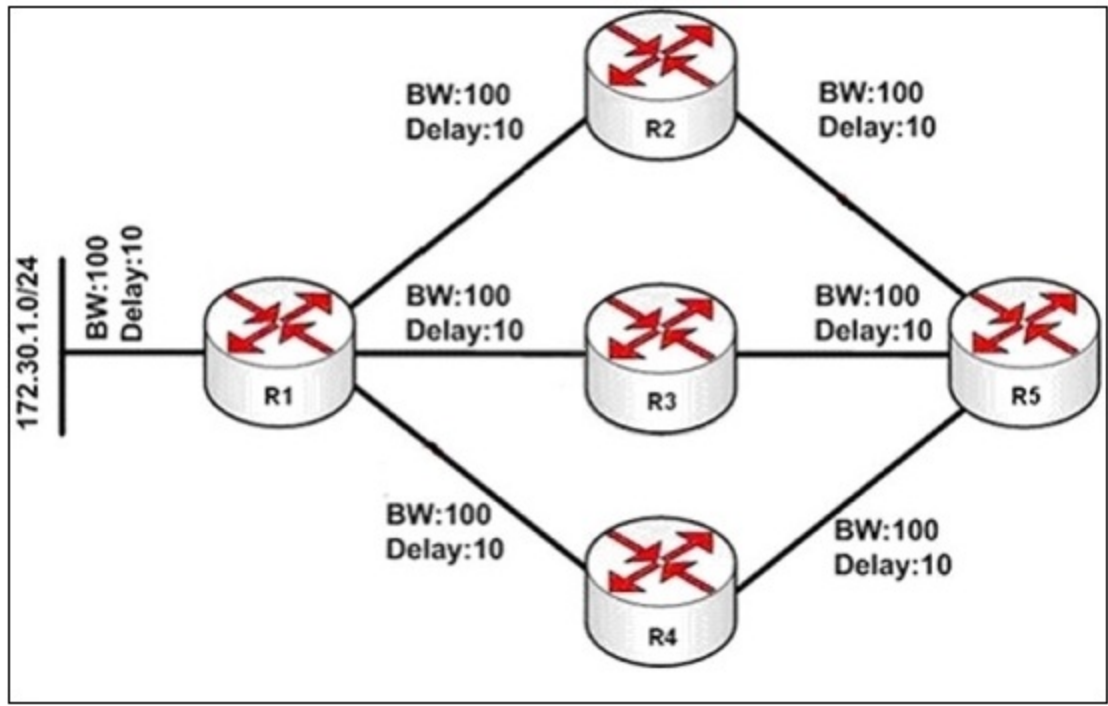
Select all that apply.

Mark

Show Answer Calculator

Item 15 of 38 (Exam A, Q269)

You are a network technician at ccie.com, study the exhibit carefully.  
 In this EIGRP network, the output of the command show interface for the link between R2 and R5 indicates that the link load varies between 10 and 35.  
 Which K value setting will be used to make sure that this link is not used by EIGRP when the link load reaches 35, but can be used again when the link load drops below 20?



- A. Link load is not read in real time, so there is no way to set the K values to make EIGRP choose to use or not use a link based on the link load.
- B. There is not enough information in the question to determine the correct answer.
- C. Use the K5 setting to include load in EIGRP's metric calculations.
- D. Use the K2 setting to include load in EIGRP's metric calculations.

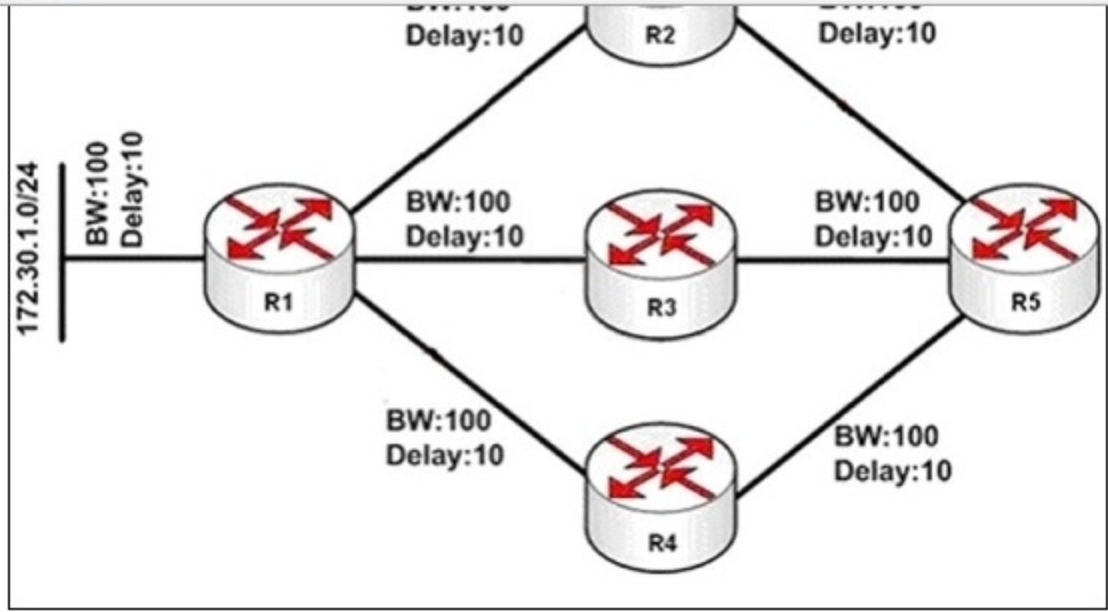
Select the best choice.

100%

Previous Next Review

Pause Save Session End Exam

Mark



- A. Link load is not read in real time, so there is no way to set the K values to make EIGRP choose to use or not use a link based on the link load.
- B. There is not enough information in the question to determine the correct answer.
- C. Use the K5 setting to include load in EIGRP's metric calculations.
- D. Use the K2 setting to include load in EIGRP's metric calculations.

Answer: A  
Section: EIGRP

#### Using the Metrics

When you initially configure EIGRP, remember these two basic rules if you are attempting to influence EIGRP metrics:

The bandwidth should always be set to the real bandwidth of the interface; multipoint serial links and other mismatched media speed situations are the exceptions to this rule.

The delay should always be used to influence EIGRP routing decisions. Because EIGRP uses the interface bandwidth to determine the rate at which to send packets, it is important that these be set correctly.

If it is necessary to influence the path EIGRP chooses, always use delay to do so.

At lower bandwidths, the bandwidth has more influence over the total metric; at higher bandwidths, the delay has more influence over the total metric

#### Reference

[http://www.cisco.com/en/US/tech/tk365/technologies\\_white\\_paper09186a0080094cb7.shtml](http://www.cisco.com/en/US/tech/tk365/technologies_white_paper09186a0080094cb7.shtml)

Select the best choice.

100%

Previous

Next

Review

Pause

Save Session

End Exam

Mark

Time Remaining: 1:26:25

Item 16 of 38 (Exam A, Q415)

[Show Answer](#)[Calculator](#)

Which individual metrics can be used to calculate the composite EIGRP metric?

- A. total delay, minimum bandwidth, reliability, load, MTU
- B. total delay, minimum bandwidth, reliability, load, MTU, hop count
- C. total delay, minimum bandwidth, reliability, load, hop count
- D. total delay, minimum bandwidth, reliability, load
- E. total delay, minimum bandwidth

Select the best choice.

100%

[Previous](#)[Next](#)[Review](#) ▼[Pause](#)[Save Session](#)[End Exam](#)

Mark

Hide Answer

Calculator

Item 16 of 38 (Exam A, Q415)

Which individual metrics can be used to calculate the composite EIGRP metric?

- A. total delay, minimum bandwidth, reliability, load, MTU
- B. total delay, minimum bandwidth, reliability, load, MTU, hop count
- C. total delay, minimum bandwidth, reliability, load, hop count
- D. total delay, minimum bandwidth, reliability, load
- E. total delay, minimum bandwidth

Answer: D

Section: EIGRP

EIGRP uses a composite metric, meaning it's made up of several smaller metrics:

- Bandwidth (minimum along path) K1
- Delay (cumulative along path) K3
- Reliability K4
- Load K2
- MTU K5

The metric formula (which is also well explained in Cisco's EIGRP Whitepaper is

$$\text{metric} = [K1 * \text{bandwidth} + (K2 * \text{bandwidth}) / (256 - \text{load}) + K3 * \text{delay}] * [K5 / (\text{reliability} + K4)]$$

Where K1 through K5 are constants that can be changed with the metric weights command, but default to K1=K3=1 and K2=K4=K5=0.

<http://ccnprecertification.com/2004/05/05/eigrp-metrics-and-path-selection/>

Select the best choice.

100%



Previous

Next

Review



Pause

Save Session

End Exam

Mark

Show Answer

Calculator

Item 17 of 38 (Exam A, Q166)

Refer to the exhibit.

Routers A and B are directly connected and running EIGRP, but they are unable to form a neighbor relationship. What is the most likely cause?

**Router A relevant configuration:**

```
interface fa0/0
ip address 10.10.10.1 255.255.255.252
ip address 10.10.10.9 255.255.255.252 secondary
ip address 10.10.10.5 255.255.255.252 secondary
```

```
router eigrp 100
network 10.10.10.0 0.0.0.255
```

**Router B relevant configuration:**

```
interface fa0/0
ip address 10.10.10.6 255.255.255.252
ip address 10.10.10.2 255.255.255.252 secondary
ip address 10.10.10.10 255.255.255.252 secondary
```

```
router eigrp 100
network 10.10.10.0 0.0.0.3
network 10.10.10.4 0.0.0.3
network 10.10.10.8 0.0.0.3
```

- A. The network statements are misconfigured.
- B. The IP address statements are misconfigured.
- C. The autonomous system is misconfigured.
- D. There is a physical issue with the cable.

Select the best choice.

100%

Previous

Next

Review

Pause

Save Session

End Exam

Mark

```
ip address 10.10.10.5 255.255.255.252 secondary
```

```
router eigrp 100  
network 10.10.10.0 0.0.0.255
```

**Router B relevant configuration:**

```
interface fa0/0  
ip address 10.10.10.6 255.255.255.252  
ip address 10.10.10.2 255.255.255.252 secondary  
ip address 10.10.10.10 255.255.255.252 secondary
```

```
router eigrp 100  
network 10.10.10.0 0.0.0.3  
network 10.10.10.4 0.0.0.3  
network 10.10.10.8 0.0.0.3
```

- A. The network statements are misconfigured.
- B. The IP address statements are misconfigured.
- C. The autonomous system is misconfigured.
- D. There is a physical issue with the cable.

Answer: B  
Section: EIGRP

To form neighbor relationship in EIGRP, these conditions must be met:

Pass the authentication process

Have the same configured AS number

Must believe that the source IP address of a received Hello is in that router's primary connected subnet on that interface

Match K values

The third item means that the primary ip address of the neighbor must be in the same subnet with the primary ip address of the received interface.

But in this case the primary ip address of router A is 10.10.10.1/30 and it is not in the same subnet with the primary ip address of router B 10.10.10.6/30 -> no EIGRP neighbor relationship is formed.

Select the best choice.

100%

Previous

Next

Review



Pause

Save Session

End Exam

Mark

Time Remaining: 1:25:35

Item 18 of 38 (Exam A, Q368)

[Show Answer](#)[Calculator](#)

Which two EIGRP options will limit a query domain? (Choose two.)

- A. configuring EIGRP stubs
- B. configuring a second EIGRP AS and redistributing
- C. configuring summary addresses
- D. configuring an offset-list
- E. configuring a prefix-list
- F. configuring unicast neighbors

Select all that apply.

100%

[Previous](#)[Next](#)[Review](#)[Pause](#)[Save Session](#)[End Exam](#)

Mark

Time Remaining: 1:25:26

Item 18 of 38 (Exam A, Q368)

[Hide Answer](#)[Calculator](#)

Which two EIGRP options will limit a query domain? (Choose two.)

- A. configuring EIGRP stubs
- B. configuring a second EIGRP AS and redistributing
- C. configuring summary addresses
- D. configuring an offset-list
- E. configuring a prefix-list
- F. configuring unicast neighbors

Answer: AC

Section: EIGRP

Select all that apply.

100%

[Previous](#)[Next](#)[Review](#) ▼[Pause](#)[Save Session](#)[End Exam](#)