

Mark

Time Remaining: 2:31:20

Item 30 of 38 (Exam A, Q67)

[Show Answer](#)[Calculator](#)

Which three statements accurately describe a link-state routing protocol? (Choose three.)

- A. Each router sends routing information to all nodes in the flooding domain.
- B. Each router sends all or some portion of its routing table to neighboring routers.
- C. Each router individually builds a picture of the entire flooding domain.
- D. Each router has knowledge of all other routers in the flooding domain.
- E. Each router is only aware of neighboring routers.
- F. Each router installs routes directly from the routing updates into the routing table.

Select all that apply.

100%

[Previous](#)[Next](#)[Review](#) ▼[Pause](#)[Save Session](#)[End Exam](#)

Mark

Time Remaining: 2:31:10

Item 30 of 38 (Exam A, Q67)

Hide Answer

Calculator

Which three statements accurately describe a link-state routing protocol? (Choose three.)

- A. Each router sends routing information to all nodes in the flooding domain.
- B. Each router sends all or some portion of its routing table to neighboring routers.
- C. Each router individually builds a picture of the entire flooding domain.
- D. Each router has knowledge of all other routers in the flooding domain.
- E. Each router is only aware of neighboring routers.
- F. Each router installs routes directly from the routing updates into the routing table.

Answer: ACD

Section: IP Routing

Select all that apply.

100% 

Previous

Next

Review



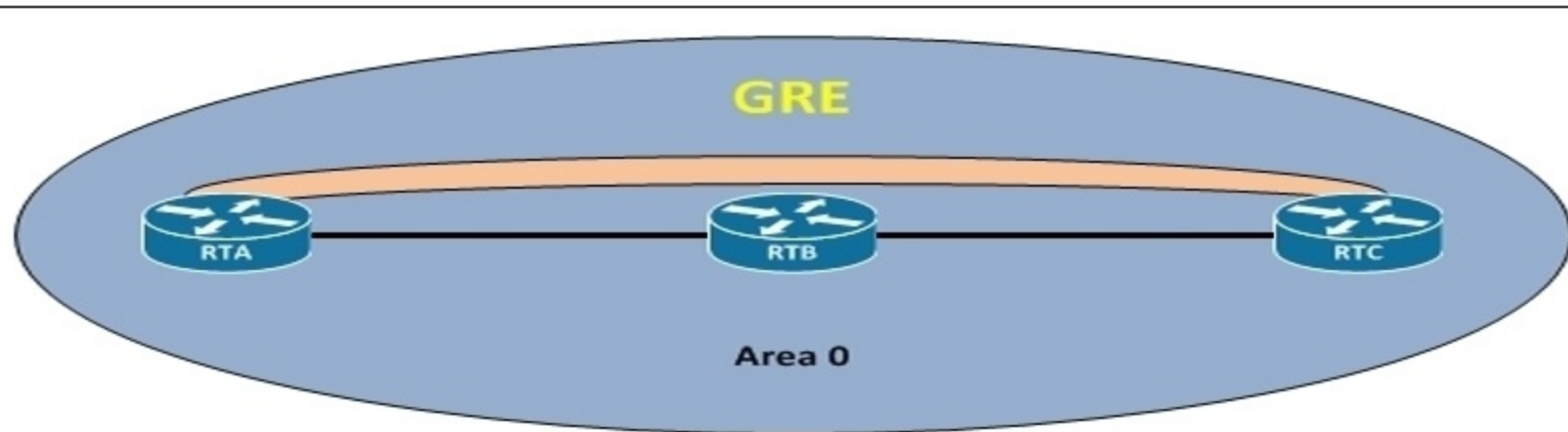
Pause

Save Session

End Exam

Mark

Refer to the exhibit.
As soon as the OSPF neighbors are established across the GRE tunnel between RTA and RTC, the GRE tunnel immediately goes down/down.
What could be a possible cause?



```
RTA, RTB, RTC :  
router OSPF 1  
network 0.0.0.0 area 0
```

```
RTA  
*Nov 29 18:09:26.390: %TUN-5-RCURDOWN: Tunnel11 temporarily disabled due to recursive routing  
*Nov 29 18:09:27.370: %OSPF-5-ADJCHG: Process 1, Nov 172.16.255.13 on Tunnel11 from FULL to Down, Neighbor Down:  
Interface down or detached  
*Nov 29 18:09:27.390: %LINEPROTO-5-UPDOWN: Line protocol on Interface Tunnel11, change state to down
```

- A. The route to the tunnel destination is preferred via the tunnel.
- B. Autosummary is not configured.
- C. GRE tunnels cannot be in area 0.
- D. A misconfigured access list is on the router C tunnel interface.
- E. A misconfigured access list is on the router A tunnel interface.

Select the best choice.

100%

Mark

```
RTA, RTB, RTC :  
router OSPF 1  
network 0.0.0.0 area 0
```

RTA

```
*Nov 29 18:09:26.390: %TUN-5-RCURDOWN: Tunnel11 temporarily disabled due to recursive routing  
*Nov 29 18:09:27.370: %OSPF-5-ADJCHG: Process 1, Nov 172.16.255.13 on Tunnel11 from FULL to Down, Neighbor Down:  
Interface down or detached  
*Nov 29 18:09:27.390: %LINEPROTO-5-UPDOWN: Line protocol on Interface Tunnel11, change state to down
```

- A. The route to the tunnel destination is preferred via the tunnel.
- B. Autosummary is not configured.
- C. GRE tunnels cannot be in area 0.
- D. A misconfigured access list is on the router C tunnel interface.
- E. A misconfigured access list is on the router A tunnel interface.

Answer: A

Section: IP Routing

The error message, %TUN-5-RECURDOWN: Tunnel0 temporarily disabled due to recursive routing, means that the generic routing encapsulation (GRE) tunnel router has discovered a recursive routing problem. This condition is usually due to one of the following causes:

A misconfiguration that causes the router to try to route to the tunnel destination address using the tunnel interface itself (recursive routing).

A temporary instability caused by route flapping elsewhere in the network. Tunnel interface status depends on the IP reachability to the tunnel destination. When the router detects a recursive routing failure for the tunnel destination, it shuts the tunnel interface down for a few minutes so that the situation causing the problem can resolve itself as routing protocols converge. If the problem is caused by misconfiguration, the link may oscillate indefinitely.

Another symptom of this problem is continuously flapping Enhanced Interior Gateway Routing Protocol (EIGRP), Open Shortest Path First (OSPF), or Border Gateway Protocol (BGP) neighbors, when the neighbors are over a GRE tunnel.

This document shows an example of troubleshooting an oscillating tunnel interface that is running EIGRP.

Reference

http://www.cisco.com/en/US/tech/tk365/technologies_tech_note09186a0080094690.shtml

Select the best choice.

100%

Mark

Item 32 of 38 (Exam A, Q360)

Refer to the exhibit. Which statement is correct about this configuration?

```
PE1#sh run vrf 999
ip vrf 999
 rd 99.99.99.99:99
 route-target export 99:99
 route-target import 99:99
!
```

- A. This is not a legal configuration.
- B. The RD is a type 0 RD.
- C. The RD is a type 1 RD.
- D. The RD is a type 2 RD.
- E. This is a special RD that is used only for management VRFs.

Select the best choice.

100% 

Mark

Time Remaining: 2:30:15

- A. This is not a legal configuration.
- B. The RD is a type 0 RD.
- C. The RD is a type 1 RD.
- D. The RD is a type 2 RD.
- E. This is a special RD that is used only for management VRFs.

Answer: C

Section: IP Routing

The route distinguisher (RD) is an 8-octet value consisting of 2 major fields, the Type Field (2 octets) and Value Field (6 octets). The type field determines how the value field should be interpreted. The three Type values, as defined in the internet draft, are:

Type 0:

Type Field (2 octets)

Administrator subfield (2 octets)

Assigned number subfield (4 octets)

The administrator field must contain an AS number (using private AS numbers is discouraged). The Assigned field contains a number assigned by the service provider.

Type 1:

Type Field (2 octets)

Administrator subfield (4 octets)

Assigned number subfield (2 octets)

The administrator field must contain an IP address (using private IP address space is discouraged). The Assigned field contains a number assigned by the service provider.

Type 2:

Type Field (2 octets)

Administrator subfield (4 octets)

Assigned number subfield (2 octets)

The administrator field must contain a 4-octet AS number (using private AS numbers is discouraged). The Assigned field contains a number assigned by the service provider.

Reference

http://en.wikipedia.org/wiki/Route_distinguisher

Select the best choice.

100%

Previous

Next

Review

Pause

Save Session

End Exam

Mark

Time Remaining: 2:30:04

Item 33 of 38 (Exam A, Q268)

[Show Answer](#)[Calculator](#)

Which two statements are true about the role of split horizon? (Choose two.)

- A. It is a function used by routing protocols to install routes into routing table
- B. It is a function that prevents the advertising of routes over an interface that the router is using to reach a route
- C. Its function is to help avoid routing loops.
- D. It is a redistribution technique used by routing protocols

Select all that apply.

100%

[Previous](#)[Next](#)[Review](#) ▼[Pause](#)[Save Session](#)[End Exam](#)

Mark

Time Remaining: 2:29:53

Item 33 of 38 (Exam A, Q268)

[Hide Answer](#)[Calculator](#)

Which two statements are true about the role of split horizon? (Choose two.)

- A. It is a function used by routing protocols to install routes into routing table
- B. It is a function that prevents the advertising of routes over an interface that the router is using to reach a route
- C. Its function is to help avoid routing loops.
- D. It is a redistribution technique used by routing protocols

Answer: BC

Section: IP Routing

Select all that apply.

100%

[Previous](#)[Next](#)[Review](#) ▼[Pause](#)[Save Session](#)[End Exam](#)

Mark

Time Remaining: 2:29:36

Item 34 of 38 (Exam A, Q254)

[Show Answer](#)[Calculator](#)

Which one of the following potential issues is eliminated by using split horizon?

- A. Joined horizons
- B. Packet forwarding loops
- C. cisco Express Forwarding load-balancing inconsistency
- D. Asymmetric routing throughout the network

Select the best choice.

100%

[Previous](#)[Next](#)[Review](#) ▼[Pause](#)[Save Session](#)[End Exam](#)

Mark

Time Remaining: 2:29:29

Item 34 of 38 (Exam A, Q254)

[Hide Answer](#)[Calculator](#)

Which one of the following potential issues is eliminated by using split horizon?

- A. Joined horizons
- B. Packet forwarding loops
- C. cisco Express Forwarding load-balancing inconsistency
- D. Asymmetric routing throughout the network

Answer: B

Section: IP Routing

Select the best choice.

100%

[Previous](#)[Next](#)[Review](#) ▼[Pause](#)[Save Session](#)[End Exam](#)

Mark

Show Answer

Calculator

Item 35 of 38 (Exam A, Q37)

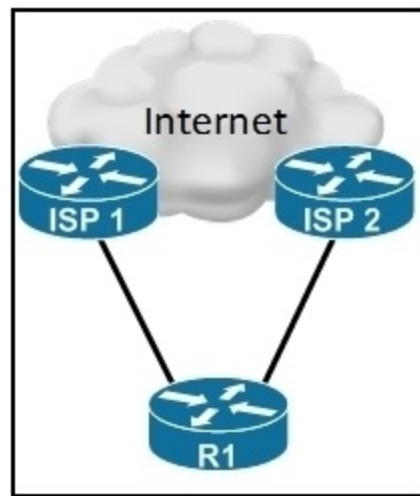
Refer to the exhibit.

A small enterprise connects its office to two ISPs, using separate T1 links.

A static route is used for the default route, pointing to both interfaces with a different administrative distance, so that one of the default routes is preferred.

Recently the primary link has been upgraded to a new 10 Mb/s Ethernet link. After a few weeks, they experienced a failure. The link did not pass traffic, but the primary static route remained active. They lost their Internet connectivity, even though the backup link was operating.

Which two possible solutions can be implemented to avoid this situation in the future? (Choose two.)



- A. Implement HSRP link tracking on the branch router R1
- B. Use a track object with an IP SLA probe for the static route on R1.
- C. Track the link state of the ethernet link using a track object on R1
- D. Use a routing protocol between R1 and the upstream ISP

Select all that apply.

100%



Previous

Next

Review



Pause

Save Session

End Exam

Mark

Hide Answer

Calculator

Item 35 of 38 (Exam A, Q37)

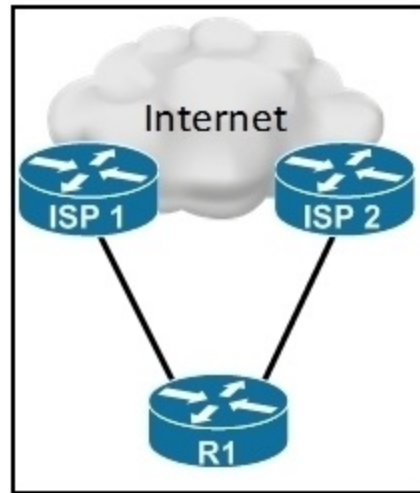
Refer to the exhibit.

A small enterprise connects its office to two ISPs, using separate T1 links.

A static route is used for the default route, pointing to both interfaces with a different administrative distance, so that one of the default routes is preferred.

Recently the primary link has been upgraded to a new 10 Mb/s Ethernet link. After a few weeks, they experienced a failure. The link did not pass traffic, but the primary static route remained active. They lost their Internet connectivity, even though the backup link was operating.

Which two possible solutions can be implemented to avoid this situation in the future? (Choose two.)



- A. Implement HSRP link tracking on the branch router R1
- B. Use a track object with an IP SLA probe for the static route on R1.
- C. Track the link state of the ethernet link using a track object on R1
- D. Use a routing protocol between R1 and the upstream ISP

Answer: BD

Section: IP Routing

Select all that apply.

100%



Previous

Next

Review



Pause

Save Session

End Exam

Mark

Time Remaining: 2:28:56

Item 36 of 38 (Exam A, Q421)

[Show Answer](#)[Calculator](#)

Which command should be used on a PE router to connect to a CE router (11.1.1.4) in VRF red?

- A. telnet 11.1.1.4 /vrf-source red
- B. telnet 11.1.1.4 source /vrf red
- C. telnet 11.1.1.4 /source vrf red
- D. telnet 11.1.1.4 /vrf red
- E. telnet 11.1.1.4 vrf red

Select the best choice.

100%

[Previous](#)[Next](#)[Review](#) ▼[Pause](#)[Save Session](#)[End Exam](#)

Mark

Hide Answer

Calculator

Item 36 of 38 (Exam A, Q421)

Which command should be used on a PE router to connect to a CE router (11.1.1.4) in VRF red?

- A. telnet 11.1.1.4 /vrf-source red
- B. telnet 11.1.1.4 source /vrf red
- C. telnet 11.1.1.4 /source vrf red
- D. telnet 11.1.1.4 /vrf red
- E. telnet 11.1.1.4 vrf red

Answer: D

Section: IP Routing

Select the best choice.

100%



Previous

Next

Review



Pause

Save Session

End Exam

Mark

Time Remaining: 2:28:33

Item 37 of 38 (Exam A, Q151)

[Show Answer](#)[Calculator](#)

A network is composed of several VRFs.
It is required that VRF users VRF_A and VRF_B be able to route to and from VRF_C, which hosts shared services.
However, traffic must not be allowed to flow between VRF_A and VRF_B. How can this be accomplished?

- A. route redistribution
- B. import and export using route descriptors
- C. import and export using route targets
- D. Cisco MPLS Traffic Engineering

Select the best choice.

100%

[Previous](#)[Next](#)[Review](#) ▼[Pause](#)[Save Session](#)[End Exam](#)

Mark

Time Remaining: 2:28:07

Item 37 of 38 (Exam A, Q151)

Hide Answer

Calculator

A network is composed of several VRFs.
It is required that VRF users VRF_A and VRF_B be able to route to and from VRF_C, which hosts shared services.
However, traffic must not be allowed to flow between VRF_A and VRF_B. How can this be accomplished?

- A. route redistribution
- B. import and export using route descriptors
- C. import and export using route targets
- D. Cisco MPLS Traffic Engineering

Answer: C
Section: IP Routing

Select the best choice.

100%

Previous

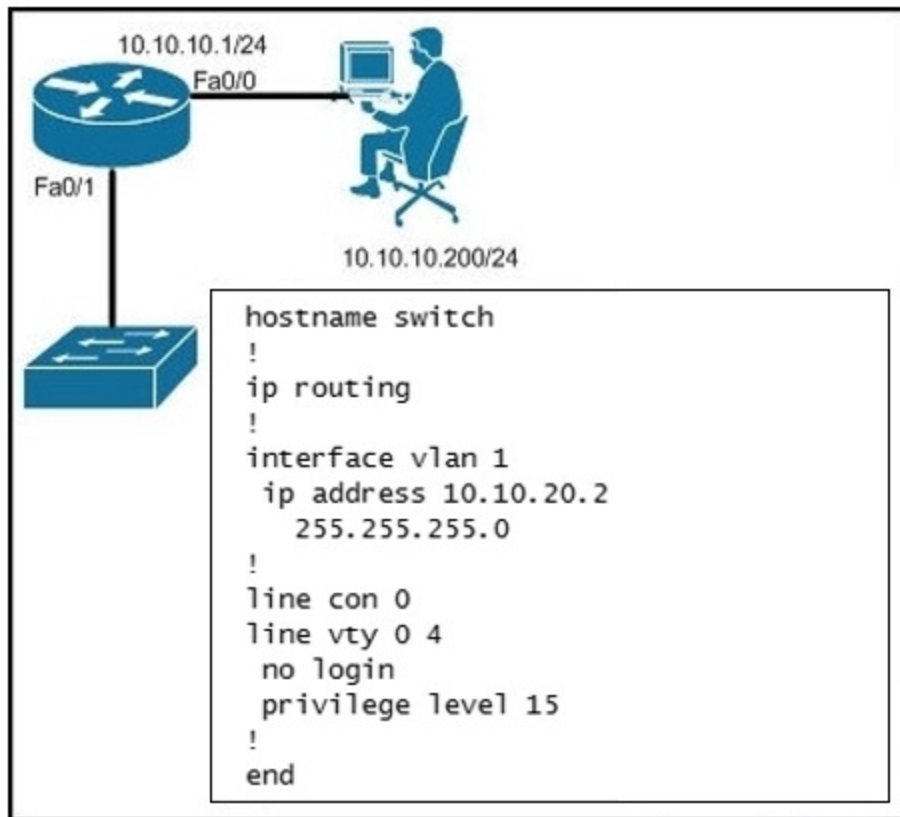
Next

Review ▾

Pause

Save Session

End Exam



A user with IP address 10.10.10.200 fails to use Telnet to a switch with IP address 10.10.20.2. What is most likely the issue?

- A. The switch is not configured with a default gateway.
- B. The HTTP server is not enabled on the switch.
- C. STP is blocking the connection from switch to router.
- D. IP routing is enabled on the switch, but no route pointing back to the client is configured.
- E. The switch is configured with an IP address from the wrong subnet.

Select the best choice.

100%

Previous

Next

Review

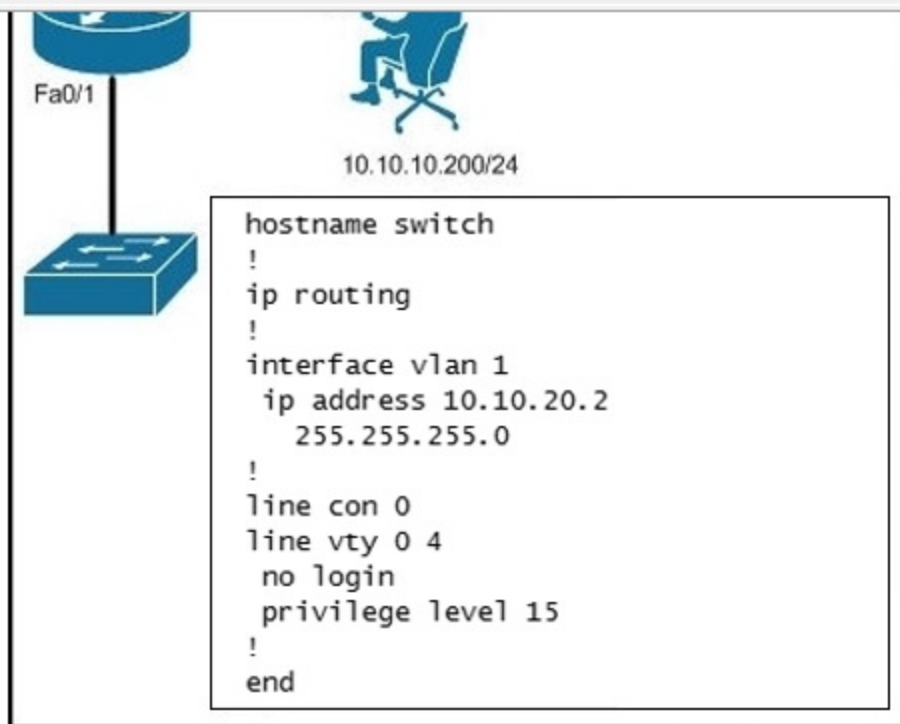


Pause

Save Session

End Exam

Mark



A user with IP address 10.10.10.200 fails to use Telnet to a switch with IP address 10.10.20.2. What is most likely the issue?

- A. The switch is not configured with a default gateway.
- B. The HTTP server is not enabled on the switch.
- C. STP is blocking the connection from switch to router.
- D. IP routing is enabled on the switch, but no route pointing back to the client is configured.
- E. The switch is configured with an IP address from the wrong subnet.

Answer: D
Section: IP Routing

Select the best choice.

100%

Previous

Next

Review

Pause

Save Session

End Exam

Mark

Time Remaining: 2:49:37

Item 1 of 10 (Exam A, Q160)

[Show Answer](#)[Calculator](#)

What s the default stratum clock on a Cisco router, when you see the key word "master" configured on the NTP line?

- A. 1
- B. 2
- C. 4
- D. 6
- E. 8

Select the best choice.

100%

[Previous](#)[Next](#)[Review](#) ▼[Pause](#)[Save Session](#)[End Exam](#)

Mark

Time Remaining: 2:49:25

Item 1 of 10 (Exam A, Q160)

Hide Answer


Calculator

What s the default stratum clock on a Cisco router, when you see the key word "master" configured on the NTP line?

- A. 1
- B. 2
- C. 4
- D. 6
- E. 8

Answer: E
Section: IP Services

Select the best choice.

100% 

Previous

Next

Review ▾

Pause

Save Session

End Exam

Mark

Time Remaining: 2:49:14

Item 2 of 10 (Exam A, Q334)

[Show Answer](#)[Calculator](#)

What is a characteristic of Network Time Protocol?

- A. NTP updates are sent in the timezone they are collected in, and the syslog server will adjust based on the input time.
- B. NTP authentication verifies the source, not the recipient.
- C. NTP authentication requires that the recipient has multiple strata clocks to ensure accuracy.
- D. Secure NTP can be configured to use SHA-1 hashing, since NTP is very insecure.
- E. A stratum 0 clock should be configured at the core of every network, so it can connect to an accurate time source.

Select the best choice.

100%

[Previous](#)[Next](#)[Review](#) ▼[Pause](#)[Save Session](#)[End Exam](#)

Mark

Time Remaining: 2:48:44

Item 2 of 10 (Exam A, Q334)

Hide Answer

Calculator

What is a characteristic of Network Time Protocol?

- A. NTP updates are sent in the timezone they are collected in, and the syslog server will adjust based on the input time.
- B. NTP authentication verifies the source, not the recipient.
- C. NTP authentication requires that the recipient has multiple strata clocks to ensure accuracy.
- D. Secure NTP can be configured to use SHA-1 hashing, since NTP is very insecure.
- E. A stratum 0 clock should be configured at the core of every network, so it can connect to an accurate time source.

Answer: B

Section: IP Services

Select the best choice.

100% 

Previous

Next

Review



Pause

Save Session

End Exam

Mark

Time Remaining: 2:48:03

Item 3 of 10 (Exam A, Q186)

[Show Answer](#)[Calculator](#)

When using IP SLA FTP operation, which two FTP modes are supported? (Choose two.)

- A. Only the FTP PUT operation type is supported.
- B. Active mode is supported.
- C. Passive FTP transfer modes are supported.
- D. FTP URL specified for the FTP GET operation is not supported.

Select all that apply.

100%

[Previous](#)[Next](#)[Review](#) ▼[Pause](#)[Save Session](#)[End Exam](#)

Mark

Hide Answer

Calculator

Item 3 of 10 (Exam A, Q186)

When using IP SLA FTP operation, which two FTP modes are supported? (Choose two.)

- A. Only the FTP PUT operation type is supported.
- B. Active mode is supported.
- C. Passive FTP transfer modes are supported.
- D. FTP URL specified for the FTP GET operation is not supported.

Answer: BC

Section: IP Services

Select all that apply.

100%



Previous

Next

Review



Pause

Save Session

End Exam

Mark

Time Remaining: 2:47:35

Item 4 of 10 (Exam A, Q384)

[Show Answer](#)[Calculator](#)

Which protocol and port have been assigned by IANA for RADIUS authentication?

- A. UDP/1812
- B. UDP/1813
- C. TCP/1812
- D. TCP/1813

Select the best choice.

100%

[Previous](#)[Next](#)[Review](#) ▼[Pause](#)[Save Session](#)[End Exam](#)

Mark

Time Remaining: 2:47:27

Item 4 of 10 (Exam A, Q384)

Hide Answer

Calculator

Which protocol and port have been assigned by IANA for RADIUS authentication?

- A. UDP/1812
- B. UDP/1813
- C. TCP/1812
- D. TCP/1813

Answer: A
Section: IP Services

Select the best choice.

100%

Previous

Next

Review



Pause

Save Session

End Exam

Mark

Time Remaining: 2:47:17

Item 5 of 10 (Exam A, Q236)

[Show Answer](#)[Calculator](#)

For the following LMI types, which three can be configured for use with Frame Relay on a Cisco router? (Choose three.)

- A. Cisco
- B. ANSI - Annex D
- C. Q.931 - Annex B
- D. Q.933 - Annex A

Select all that apply.

100%

[Previous](#)[Next](#)[Review](#) ▼[Pause](#)[Save Session](#)[End Exam](#)

Mark

Time Remaining: 2:47:03

Item 5 of 10 (Exam A, Q236)

[Hide Answer](#)[Calculator](#)

For the following LMI types, which three can be configured for use with Frame Relay on a Cisco router? (Choose three.)

- A. Cisco
- B. ANSI - Annex D
- C. Q.931 - Annex B
- D. Q.933 - Annex A

Answer: ABD

Section: IP Services

Select all that apply.

100%

[Previous](#)[Next](#)[Review](#) ▼[Pause](#)[Save Session](#)[End Exam](#)

Mark

Time Remaining: 2:46:55

Item 6 of 10 (Exam A, Q187)

[Show Answer](#)[Calculator](#)

If a certificate authority trustpoint is not configured when enabling HTTPS and the remote HTTPS server requires client authentication, connections to the secure HTTP client will fail. Which command must be enabled for correct operation?

- A. ip http client secure-ciphersuite 3des-ede-cbc-sha
- B. ip https max-connections 10
- C. ip http timeout-policy idle 30 life 120 requests 100
- D. ip http client secure-trustpoint trustpoint-name

Select the best choice.

100%

[Previous](#)[Next](#)[Review](#) ▼[Pause](#)[Save Session](#)[End Exam](#)

Mark

Hide Answer

Calculator

Item 6 of 10 (Exam A, Q187)

If a certificate authority trustpoint is not configured when enabling HTTPS and the remote HTTPS server requires client authentication, connections to the secure HTTP client will fail. Which command must be enabled for correct operation?

- A. `ip http client secure-ciphersuite 3des-ede-cbc-sha`
- B. `ip https max-connections 10`
- C. `ip http timeout-policy idle 30 life 120 requests 100`
- D. `ip http client secure-trustpoint trustpoint-name`

Answer: D

Section: IP Services

IP http client secure-trustpoint

To specify the remote certificate authority (CA) trustpoint that should be used if certification is needed for the secure HTTP client, use the `ip http client secure-trustpoint` command in global configuration mode.

To remove a client trustpoint from the configuration, use the `no` form of this command.

IP http client secure-trustpoint trustpoint-name

Select the best choice.

100%



Previous

Next

Review



Pause

Save Session

End Exam

Mark

Time Remaining: 2:46:31

Item 7 of 10 (Exam A, Q196)

[Show Answer](#)[Calculator](#)

Which option is true when calculating round-trip delay in IP SLA operations?

- A. The processing time on the end routers is only assessed for operations that involve the responder.
- B. The processing time on the end routers is only assessed for operations that involve the transmitter.
- C. The processing time on the end routers is only assessed for operations that involve both the responder and the transmitter.
- D. The processing time on the end routers is not assessed for neither the responder nor the transmitter.

Select the best choice.

100%

[Previous](#)[Next](#)[Review](#) ▼[Pause](#)[Save Session](#)[End Exam](#)

Mark

Hide Answer

Calculator

Item 7 of 10 (Exam A, Q196)

Which option is true when calculating round-trip delay in IP SLA operations?

- A. The processing time on the end routers is only assessed for operations that involve the responder.
- B. The processing time on the end routers is only assessed for operations that involve the transmitter.
- C. The processing time on the end routers is only assessed for operations that involve both the responder and the transmitter.
- D. The processing time on the end routers is not assessed for neither the responder nor the transmitter.

Answer: A

Section: IP Services

Select the best choice.

100%



Previous

Next

Review



Pause

Save Session

End Exam

Mark

Time Remaining: 2:46:12

Item 8 of 10 (Exam A, Q195)

[Show Answer](#)[Calculator](#)

When running IP SLA, which application type should be used if you want to know round-trip delay, jitter, and packet loss for the full path?

- A. ICMP path echo
- B. UDP echo
- C. ICMP path jitter
- D. Application Performance Monitor
- E. TCP connect

Select the best choice.

100%

[Previous](#)[Next](#)[Review](#) ▼[Pause](#)[Save Session](#)[End Exam](#)

Mark

Hide Answer

Calculator

Item 8 of 10 (Exam A, Q195)

When running IP SLA, which application type should be used if you want to know round-trip delay, jitter, and packet loss for the full path?

- A. ICMP path echo
- B. UDP echo
- C. ICMP path jitter
- D. Application Performance Monitor
- E. TCP connect

Answer: C
Section: IP Services

Select the best choice.

100%



Previous

Next

Review



Pause

Save Session

End Exam

Show Answer

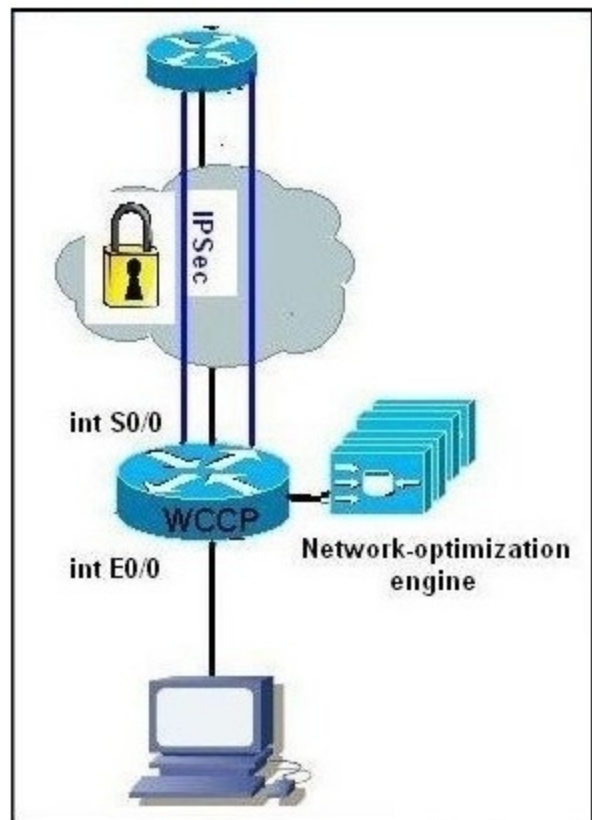
Calculator

Item 9 of 10 (Exam A, Q197)

Refer to the exhibit.

You are asked to enable redirection for a network optimization engine that will be connected directly to your company CPE.

What is the correct configuration to enable redirection for traffic optimization?



- A. (config)#interface s0/0
(config-if)#ip wccp 61 out
(config)#interface e0/0
(config-if)#ip wccp 62 out
- B. (config)#interface s0/0

Select the best choice.

100%

Previous

Next

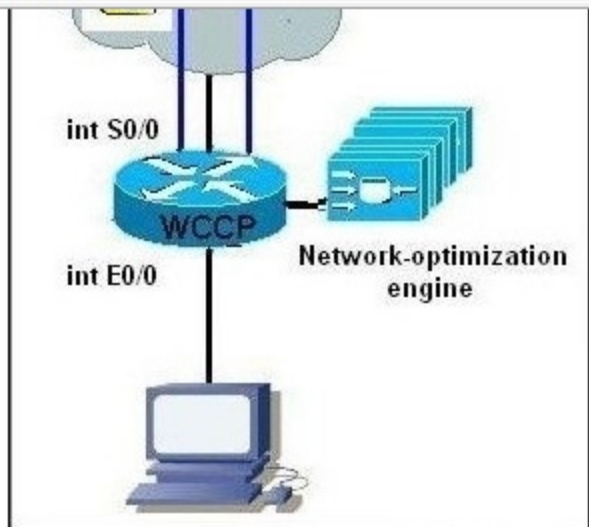
Review

Pause

Save Session

End Exam

Mark



- A. (config)#interface s0/0
(config-if)#ip wccp 61 out
(config)#interface e0/0
(config-if)#ip wccp 62 out
- B. (config)#interface s0/0
(config-if)#ip wccp 62 in
(config)#interface e0/0
(config-if)#ip wccp 61 in
- C. (config)#interface s0/0
(config-if)#ip wccp 61 in
(config-if)#ip wccp 62 out
- D. (config)#interface e0/0
(config-if)#ip wccp 61 in
(config-if)#ip wccp 62 out
- E. (config)#interface e0/0
(config-if)#ip wccp 61 out
(config-if)#ip wccp 62 in
- F. (config)#interface s0/0
(config-if)#ip wccp 61 out
(config-if)#ip wccp 62 in

Select the best choice.

100%

Previous

Next

Review



Pause

Save Session

End Exam

Mark

Hide Answer

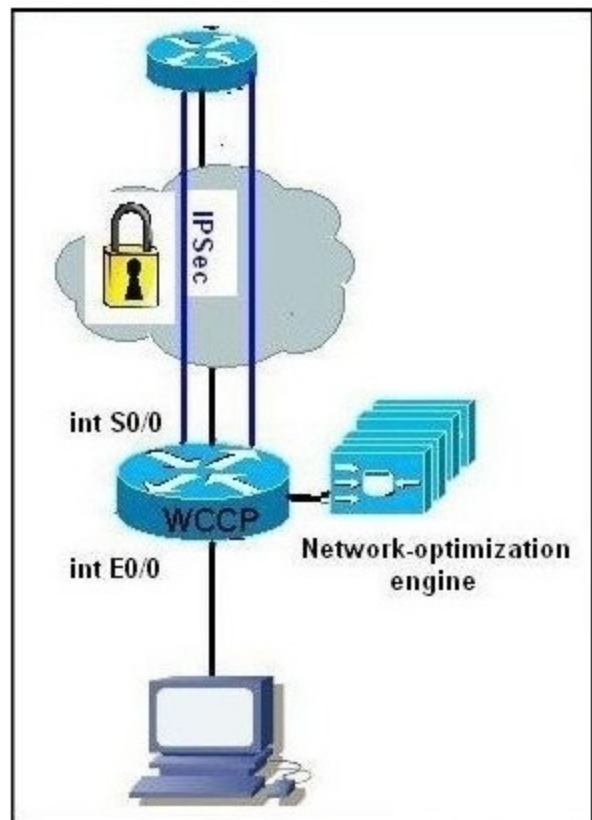
Calculator

Item 9 of 10 (Exam A, Q197)

Refer to the exhibit.

You are asked to enable redirection for a network optimization engine that will be connected directly to your company CPE.

What is the correct configuration to enable redirection for traffic optimization?



- A. `(config)#interface s0/0`
`(config-if)#ip wccp 61 out`
`(config)#interface e0/0`
`(config-if)#ip wccp 62 out`
- B. `(config)#interface s0/0`

Select the best choice.

100%

Previous

Next

Review

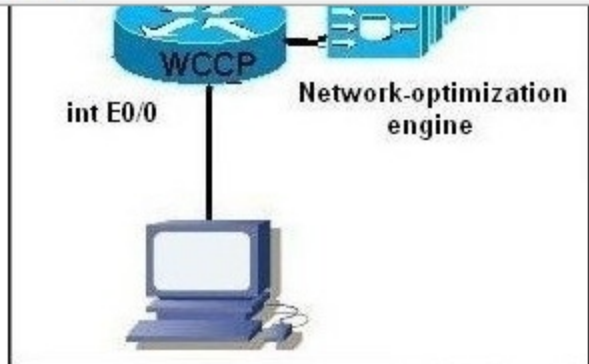


Pause

Save Session

End Exam

Mark



- A. (config)#interface s0/0
(config-if)#ip wccp 61 out
(config)#interface e0/0
(config-if)#ip wccp 62 out
- B. (config)#interface s0/0
(config-if)#ip wccp 62 in
(config)#interface e0/0
(config-if)#ip wccp 61 in
- C. (config)#interface s0/0
(config-if)#ip wccp 61 in
(config-if)#ip wccp 62 out
- D. (config)#interface e0/0
(config-if)#ip wccp 61 in
(config-if)#ip wccp 62 out
- E. (config)#interface e0/0
(config-if)#ip wccp 61 out
(config-if)#ip wccp 62 in
- F. (config)#interface s0/0
(config-if)#ip wccp 61 out
(config-if)#ip wccp 62 in

Answer: D
Section: IP Services

Select the best choice.

100%

Previous

Next

Review

Pause

Save Session

End Exam

Mark

Show Answer

Calculator

Item 10 of 10 (Exam A, Q20)

Refer to the exhibit. Which statement is correct?

```
router#show control-plane host open-ports
Active internet connections (servers and established)
Prot          Local Address          Foreign Address         Service      State
tcp           *:22                   *:0                     SSH-Server  LISTEN
tcp           *:23                   *:0                     Telnet      LISTEN
tcp           *:80                   *:0                     HTTP CORE   LISTEN
!
class-map type port-filter match-all CMAP_PF
match closed-ports
!
policy-map type port-filter PMAP_PF
class CMAP_PF
drop
!
control-plane host
service-policy type port-filter input PMAP_PF
!
```

- A. This configuration is not valid.
- B. Control Plane Policing is configured; however you cannot determine on which interface it is configured.
- C. NTP is not configured on the router.
- D. Telnet traffic will be dropped.

Select the best choice.

100%

Previous

Next

Review



Pause

Save Session

End Exam

Mark

Hide Answer

Calculator

Item 10 of 10 (Exam A, Q20)

Refer to the exhibit. Which statement is correct?

```
router#show control-plane host open-ports
Active internet connections (servers and established)
Prot          Local Address          Foreign Address         Service      State
tcp           *:22                   *:0                     SSH-Server  LISTEN
tcp           *:23                   *:0                     Telnet      LISTEN
tcp           *:80                   *:0                     HTTP CORE   LISTEN
!
class-map type port-filter match-all CMAP_PF
 match closed-ports
!
policy-map type port-filter PMAP_PF
 class CMAP_PF
  drop
!
control-plane host
 service-policy type port-filter input PMAP_PF
!
```

- A. This configuration is not valid.
- B. Control Plane Policing is configured; however you cannot determine on which interface it is configured.
- C. NTP is not configured on the router.
- D. Telnet traffic will be dropped.

Answer: C
Section: IP Services

Select the best choice.

100%



Previous

Next

Review

Pause

Save Session

End Exam